

4.29 MUSIC (511)

4.29.1 Music Paper 2 (511/2)

1. Rhythm

a) Drum rhythm



$\frac{1}{2}$ mark for each correct beat x6 3 marks
 $\frac{1}{2}$ mark for time signature $\frac{1}{2}$ mark
 $\frac{1}{2}$ mark for bar lines (as whole) $\frac{1}{2}$ mark
Total (4 marks)

b) Rhythm of a melody in simple time



$\frac{1}{2}$ mark for each correct beat (bar 1-3) x12 (6 marks)
 1 mark for semibreve in bar 4 (1 mark)
 $\frac{1}{2}$ mark for correct time signature ($\frac{1}{2}$ mark)
 $\frac{1}{2}$ mark for bar lines (as whole) ($\frac{1}{2}$ mark)
Total (8 marks)

c) Rhythm of a melody in compound time.



1 mark for each correct beat (bar 1-3) x6 (6 marks)
 1 mark for dotted minim in bar 4 (1 mark)
 $\frac{1}{2}$ mark for correct time signature ($\frac{1}{2}$ mark)
 $\frac{1}{2}$ mark for bar lines (as whole) ($\frac{1}{2}$ mark)
Total (8 marks)

2. a) Melody in a major key.



$\frac{1}{2}$ mark for each correct note- pitch and value (17 notes) (8 $\frac{1}{2}$ marks)
 1 mark for correct key signature (1 mark)
 $\frac{1}{2}$ mark for correct time signature ($\frac{1}{2}$ mark)
*** Deduct 1 mark per bar for incorrect note values Total (10 marks)**

(b) Melody in a minor key.



½ mark for each correct note (pitch and value) (19 notes) (9 ½ marks)

½ mark for correct key signature (½ mark)

* Deduct 1 mark per bar for incorrect note values **Total** (10 marks)

3. Intervals

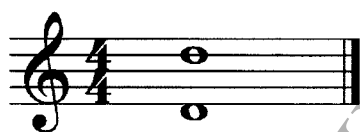


(a)

Major 3rd

Award 1 mark for a fully described interval (1 ½ mark)

Award **only ½ mark** if the interval is not fully named. e.g. 3rd



(b)

Perfect 8ve (octave)

Award 1 mark for a fully described interval (1 ½ mark)

Award **only ½ mark** if the interval is not fully described. e.g. Octave/ 8th



4. Cadences

The image shows three systems of musical notation for piano, each illustrating a different type of cadence. The first system (measures 1-5) shows a Plagal cadence. The second system (measures 6-10) shows an Imperfect cadence. The third system (measures 11-15) shows an Interrupted cadence. Each system consists of a treble clef staff and a bass clef staff, with a 3/4 time signature and a key signature of one flat (B-flat).

- | | | |
|-------------------------|-----------------------|----------------|
| | (a) Plagal cadence | (1 mark) |
| | (b) Imperfect cadence | (1 mark) |
| (c) Interrupted cadence | | (1 mark) |
| (d) Perfect cadence | | (1 mark) |
| | Total | 4 marks |

HTTP://ATIKASCHOOL.ORG



5. Modulation

(a)

