

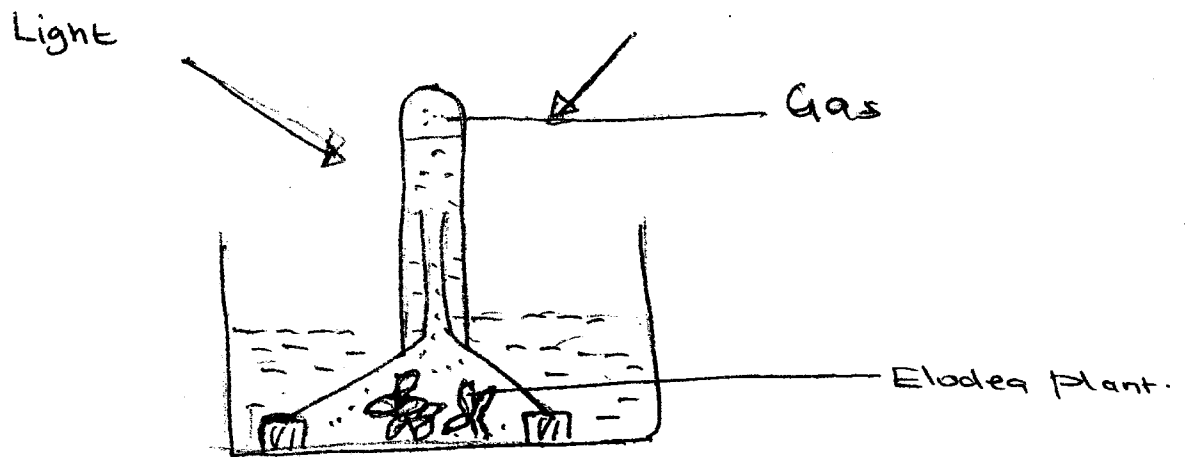
1. State the role of the following during photosynthesis.

i) Light

ii) Chlorophyll

(4mks)

2. The diagram below represent a set up that was used to investigate a certain process in plants.



i) State the process being investigated. (1mk)

ii) Identify the gas produced (1mk)

iii) Give a reason why

i) A water plant was used ?

ii) Wooden blocks were used

iii) Sodium hydrogen carbonate was added into the water. (2mks)

iv) How can the above experiment be used to determine rate of photosynthesis under varying light intensity (2mks)

3. Give 2 possible ways that happens to oxygen produced during the splitting of water molecule during photosynthesis. (2mks)

i.

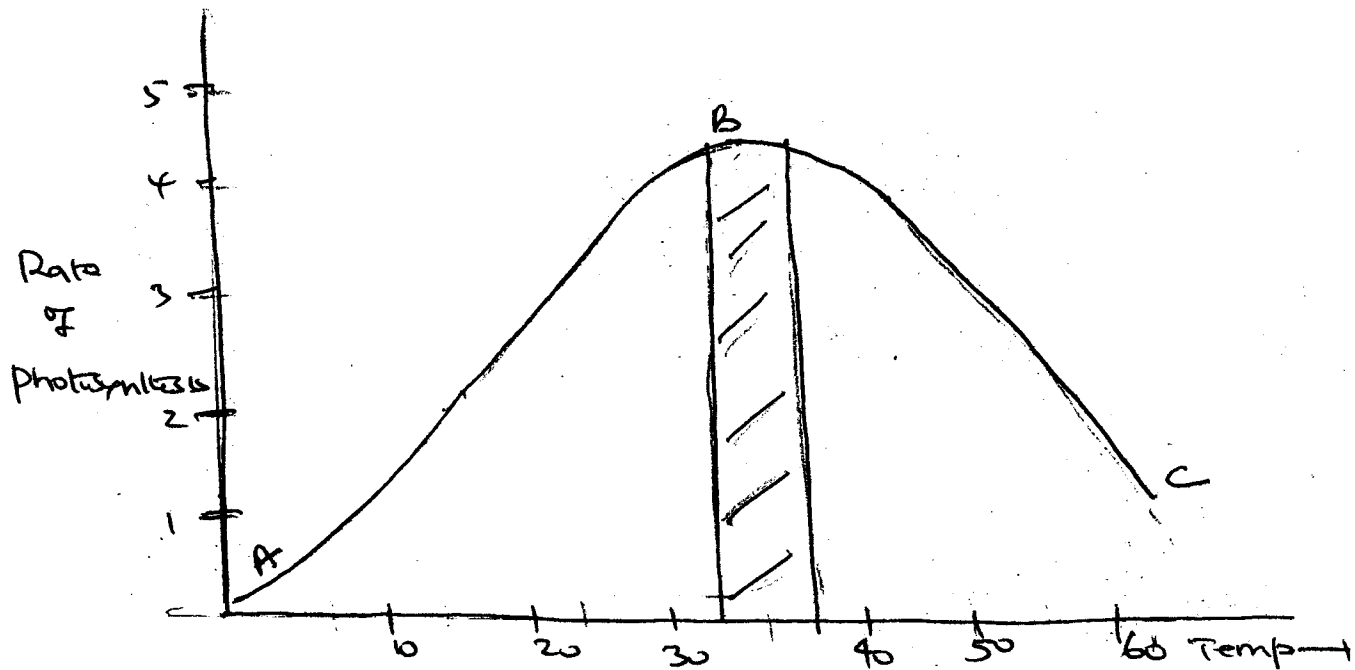
ii.

4. Explain the importance of the following when testing for starch in a leaf.

i) Boiling the leaf in hot water

ii) Dipping the leaf in methylated spirit (2mk)

5. The graph below shows the effects of temperature on the rate of photosynthesis



- i) Give a reason why the rate is increasing between point A & B (2MKS)

- ii) State the optimum temperature for this reaction (2mks)

- iii) Give a reason why the rate of photosynthesis is decreasing between point B & C (2MKS)

