

### 8.3 HINDU RELIGIOUS EDUCATION (HRE)

In the year 2012, 62 candidates sat for the Kenya Certificate of Primary Education (KCPE) Hindu Religious Education (HRE). The table below shows the statistics for the paper in the last four years.

*Table 25: The National Raw Statistics for the KCPE (HRE) for the last four years*

Year	Candidature	Mean	Standard Deviation	Maximum Mark
2009	57	16.19	4.16	30
2010	166	10.69	5.26	30
2011	200	18.70	4.96	30
2012	62	19.50	4.71	30

From the above table, the following observations can be made:

- There was a decrease in candidature in 2012 when compared to the year 2011. The candidature decreased by 138 (69%).
- There was an improvement in the performance of candidates in the year 2012 as attested by the mean of 19.50 when compared to that of 18.70 in the year 2011.

#### 8.3.1 SYLLABUS COVERAGE AND THE SKILLS TESTED

The areas covered in the syllabus together with the skills tested in the examination are shown in table 26 and 27 below.

*Table 26: Areas of Syllabus Coverage in 2012*

Areas Tested in the Syllabus	Number of Items
Attributes of Paramatma	02
Manifestations of Paramatma	03
Scriptures	03
Principles of Dharma	06
Rites and Rituals	04
Utsav	03
Yoga	03
Sadachar	04
Hindu Heritage	02
<b>Total</b>	<b>30</b>

*Table 27: Skills Tested in the year 2012*

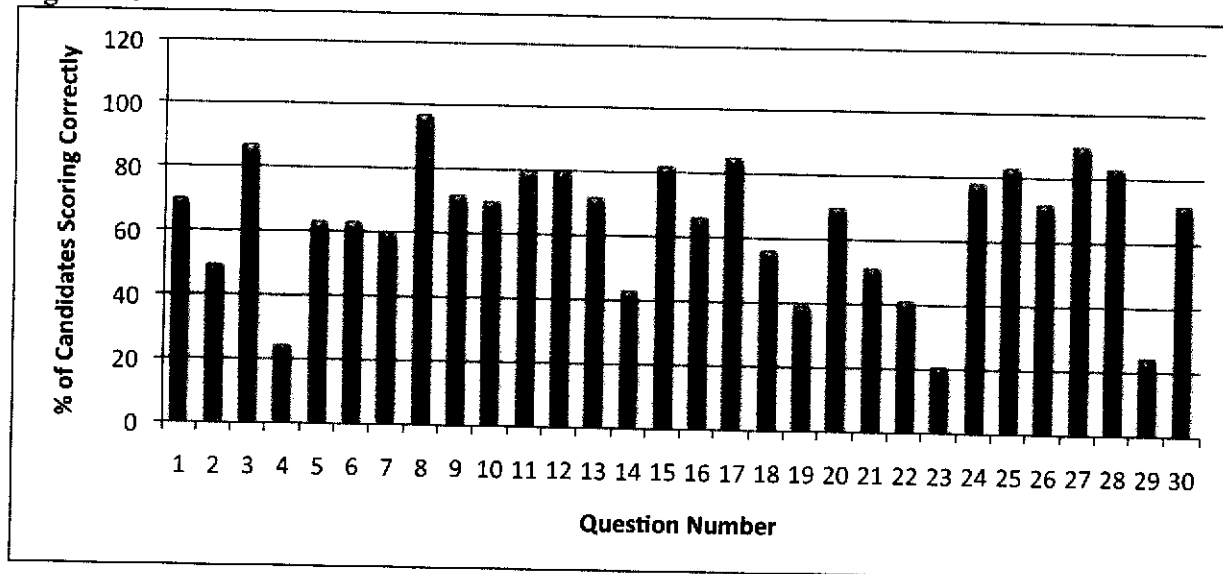
Skills	Number of Items
<b>Knowledge</b>	03
<b>Comprehension</b>	03
<b>Application</b>	09
<b>Analysis</b>	09
<b>Synthesis</b>	03
<b>Evaluation</b>	03
<b>Total</b>	<b>30</b>

### 8.3.2 ANALYSIS OF THE CANDIDATES' PERFORMANCE

This report is based on a total of 62 candidates who sat the Hindu Religious Education examination in 2012. The total candidates had a mean of **19.50** and standard deviation of **4.71**. There were 27 girls whose mean was 20.44 and a standard deviation of 4.00 and 35 boys whose mean was 18.77 and a standard deviation of 5.13.

The report gives the relative difficulty of each of the **thirty (30)** questions in the figure below. It also discusses an analysis of the candidates' response patterns in the three poorly performed questions. Any question where the total number of candidates scoring correctly are 30% or below is considered to be poorly performed.

**Figure 10**



### 8.3.4 ANALYSIS OF RELATIVELY POORLY PERFORMED QUESTIONS

The table below shows candidates' performance in the poorly performed questions in the year 2012 KCPE (HRE) examination.

**Table 29: Poorly Performed Questions in the 2012 KCPE (HRE) Examination**

Question Number	64	83	89
% of candidates choosing correct responses	23.73	20.34	23.73

#### Question 64

Who among the following Tirthankars adopted the path of Diksha at the age of a hundred years?

- A. Adinath.
- B. B.Shantinath.
- C. Parshvanath.
- D. Mallinath.

### Response Patterns

Option	A	B	C	D*
% choosing the option	27.12	18.64	30.51	23.73
Mean mark in other questions	19.06	18.55	19.39	20.14

This was an analysis question was on manifestation of Paramatma. The correct option d was picked by 23.73% of the candidates. These were the bright candidates as is attested by their mean of 20.14 in other questions. Option C attracted quite a number of candidates which shows that it was close to the answer.

### Question 83

The Yoga Asana that helps the spinal cord and abdominal muscle is

- A. Ardha Chakrasana
- B. Pada Hastasana
- C. Sapta Vajrasana
- D. Bhujang Asana.

### Response Patterns

Option	A	B	C*	D
% Choosing the option	25.42	18.64	20.34	35.59
Mean mark in other questions	18.67	16.45	19.58	21.14

This was an application question on Yoga. The correct option C was picked by 20.34% of the candidates. 35.59% who were the bright candidates chose option D as is attested by their mean mark of 21.14 in other questions, this could be because the two options C and D are closely related and the candidates were not properly taught to be able to differentiate the two.

### Question 89

Which of the following rivers originates from the Himalaya mountains?

- A. Narmada
- B. Saraswati
- C. Godavari
- D. Sindhu

### Response Patterns

Option	A	B	C	D*
% choosing the option	10.17	27.12	38.98	23.73
Mean mark in other questions	16.00	18.69	18.26	23.21

This was a knowledge question on Rites and Rituals. The correct option D was picked by 23.73% of the candidates; these were the bright candidates as is attested by their mean of 23.21 in other questions. Majority of the candidates (38.98%) went for option C. This is because the topic of Rites and Rituals is not taught exhaustively hence candidates are not able to answer the questions on this topic correctly.

### **8.3.5 GENERAL COMMENT**

Although there was a tremendous decrease in the number of candidates who sat for HRE KCPE examination in 2012, the performance improved.

Teachers need to ensure that they teach all topics in the syllabus exhaustively.

### **9.0 CONCLUSION**

The Kenya National Examinations Council hopes that teachers and all stakeholders will take a keen interest in this backwash report so as to benefit those who are preparing for future KCPE examinations.