

8.0 RELIGIOUS EDUCATION

8.1 CHRISTIAN RELIGIOUS EDUCATION

The Christian Religious Education examination is Section A part II of the Social Studies paper sat at the completion of 8 years of primary education. The paper has a total of 30 questions.

In the year 2012, 768,993 candidates registered for the examination. The mean of 2012 improved from 18.20 to 22.99 the standard deviation also improved from 4.55 in 2011 to 5.19 in 2012.

8.1.1 SYLLABUS COVERAGE AND THE SKILLS TESTED

The areas covered in the syllabus together with the skills tested in the examination are shown in table 18 and 19 below.

Table 18: Areas of Syllabus Coverage in 2012

Areas Tested in the Syllabus	Number of Items	Percentage
Old Testament	09	30.00%
New Testament	12	40.00%
African Religious Heritage	03	10.00%
Contemporary Christian Living	06	20.00%
Total	30	100.00%

Table 19: Skills Tested in the year 2012

Skills	Number of Items
Knowledge	06
Comprehension	07
Application	06
Analysis	02
Synthesis	02
Evaluation	07

The following observations can be derived from tables 18 and 19 above.

- The syllabus was adequately tested
- All the six skills were tested in the paper.
- Teachers need to encourage the candidates to apply the information learnt to attempt questions requiring high order cognitive skills of learning.

8.1.2 GENERAL PERFORMANCE OF THE CANDIDATES IN THE YEAR 2012 KCPE CRE EXAMINATION

The table below shows the mark statistics for the last four years (2009 to 2012)

Table 20: Candidates General Performance in CRE over the last four years

Year	2009	2010	2011	2012
Marked out of	30	30	30	30
National Mean	21.03	17.81	18.20	22.99
Standard Deviation	4.66	4.40	4.55	5.19

From the table it is noted that there was an improvement in the performance of the subject as shown by the mean of 22.99 in 2012 as compared to 18.20 in 2011.

8.1.3 ANALYSIS OF PERFORMANCE IN SELECTED ITEMS

The following is an analysis of the performance of the candidates based on a total population of 768,993 with a male population of 389,880 and female population of 379,113 who sat the examination. The girls had a mean mark of 23.07 and a standard deviation of 5.04 while the boys had a mean mark of 22.91 and a standard deviation of 5.33.

Figure 8

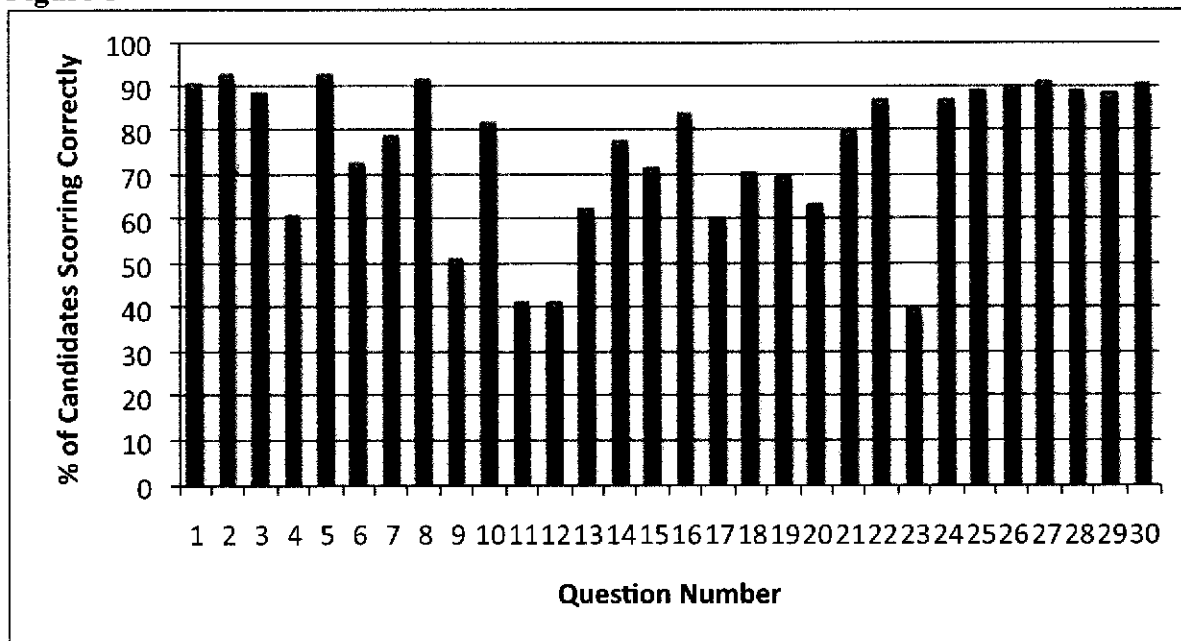


Figure 8 above shows the relative difficulty of each of the 30 items in the year 2010 CRE examination. The analysis is derived from the approximate percentage of candidates scoring correctly in each item in the paper.

Any item where the candidate scoring correctly is 30% or lower is perceived to have been poorly performed. In 2012 there were no questions that were poorly performed, in all the questions, candidates scoring correctly were 40% and above. This report will therefore look at the questions that were poorly performed i.e had 41% and below scoring correctly.

Table 21: Questions which recorded a facility index of 41% and below

Question Number	71	72	83
% Answering the item correctly	41.32	40.98	39.74

The discussion will focus on analysis of the items given above based on the ideas, skills and thinking processes that candidate may have gone through so as to arrive at the correct responses. It also focuses the misconceptions that may have led the candidates to the wrong choices. The asterisk (*) in the response pattern denotes the correct response.

Question 71

When emperor Augustus ordered a census to be taken, Joseph went to the town of Bethlehem because

- A. It was a religious centre
- B. It was nearer to Nazareth
- C. It was his ancestor's birth place
- D. He was commanded by an angel.

Response Pattern

OPTION	A	B	C*	D
% choosing the option	14.77	8.04	41.32	34.27
Mean mark in other questions	21.93	21.01	25.18	21.36

The question came from the Old Testament part of the syllabus on the Covenants.

There is some evidence of guessing as per the spread of the candidates in all the options. It is surprising that the brightest candidates in the group with the mean mark of **25.18** in other questions chose the correct answer. Many candidates chose option D. This indicates lack of adequate knowledge in this area.

Teachers should teach the Bible exhaustively.

Question 72

Who among the following women witnessed the dedication of baby Jesus in the temple?

- A. Martha.
- B. Anna.
- C. Elizabeth.
- D. Mary Magdalene.

Response Pattern

OPTION	A	B*	C	D
% choosing the option	8.33	40.98	18.64	30.56
Mean mark in other questions	20.73	26.31	22.09	19.80

The question came from the New Testament section of the syllabus on the early life of Jesus

It was a knowledge question and as such quite simple but to the point. It clearly shows that only the brightest candidates in the group with a mean mark of **26.31** in other questions got it correct. There

seems to be evidence of either confusion or guessing as shown in the percentage of those selecting option C and D. Teachers as mentioned earlier should encourage candidates to keenly read the Bible.

Question 83

In Traditional African communities, initiation is carried out mainly because

- A. Parents are able to give presents to the initiates
- B. It helps them to know those initiates who are able to lead others
- C. It prepares the initiates for marriage
- D. It enables the initiates to learn more about the society

Response Pattern

OPTION	A	B	C*	D
% choosing the option	2.44	18.85	39.74	37.45
Mean mark in other questions	16.09	20.78	24.88	22.62

The question came from the Traditional African Heritage section of the syllabus on the Rites of passage. It was an evaluation question. It is noted that all the options were correct but only the **main** reason was considered as the key evidence from the options and the responses made indicate a kind of mix up on the part of the candidates. Only the brightest in the group with a mean mark of **24.88** in other questions got it correct. Teachers need to handle questions of this kind with the keenness they deserve.

8.1.4 GENERAL COMMENTS

- (i) There was an improvement in the performance of the paper as indicated in the statistics provided.
- (ii) Questions of the Bible seem to be pausing challenges to the candidates.
- (iii) Reading of the Bible to acquire the knowledge is mandatory. This is evident in all the questions that were poorly performed.