

- A baby starts growing teeth at the age of:-  
A. 3 to months B. 5 to 7 months  
C. 4 to 6 months D. 7 to 9 months
- An adult has how many teeth?  
A. 20 B. 32 C. 16 D. 23
- The type of teeth drawn below is called:-



- A. Premolar B. Incisor C. Canine D. Molar
- HIV/AIDS is caused by:-  
A. Virus B. Bacteria C. Fungi D. Mould
- When a person doesn't brush his teeth they decay and form small holes called:-  
A. Odour B. Cavities C. Sores D. Acid
- The crops farmers grow are grouped into:-  
A. Food crops and tubers  
B. Cash crops and cereals  
C. Food crops and cash crops  
D. Oil crops and beverages
- Which one of the following is **NOT** a tuber crop?  
A. Pawpaw B. Cassava C. Yams D. Arrow roots
- Insecticides is a chemical obtained from:-  
A. Sisal B. Tea C. Cotton D. Pyrethrum
- The below shape of the moon is observed when:-

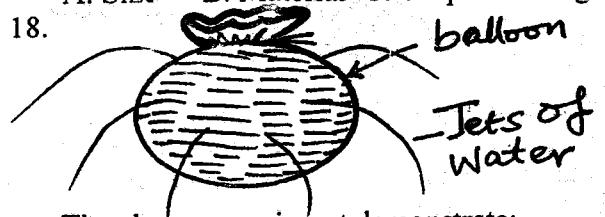


- A. in the evening B. in the morning  
C. at mid - night D. at dawn
- The dark grey clouds which bring rain are called:-  
A. Cumulus B. Stratus C. Cirrus D. Nimbus
- 



- The above drawn invertebrate is known as:-  
A. Crab B. Ant C. Scorpion D. Millipede
- Chicken kept for slaughtering to get meat are called:-

- A. Eaters B. Hatchers C. Broilers D. Layers
- Which of the following is **NOT** a domestic use of water?  
A. Washing utensils B. Bathing  
C. Irrigation D. Cleaning toilets
- Which type of soil has large particles and drains water fast?  
A. Sand B. Clay C. Loam D. Humus
- Which of the following is **NOT** found in the soil as part of its composition  
A. Small animals B. Plastic C. Water D. Humus
- Which of the following is a natural way of lighting a house ?  
A. Lamps B. Translucent material  
C. Electricity D. Opaque material
- Which one of the following does not affect floating and sinking?  
A. Size B. Material C. Shape D. Weight
- 



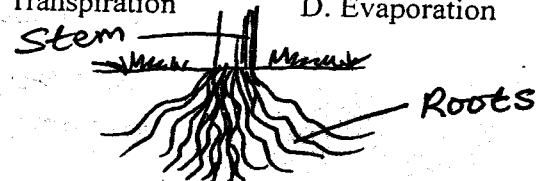
- The above experiment demonstrate:-  
A. Pressure is not exerted anywhere  
B. Pressure is exerted more at the middle  
C. Pressure is exerted more at the top  
D. Pressure is exerted in all directions
- The MAIN source of energy is:-  
A. Fuels B. solar energy  
C. Electricity D. biogas
  - Which of the following lives in the soil?  
A. Earthworm B. Snake C. Frog D. Mosquito
  - When we breath in what happens to lungs and diaphragm?  
A. Lungs expand and diaphragm dome-shaped  
B. Lungs contract and diaphragm dome-shaped  
C. Lungs contract and diaphragm flatten  
D. Lungs expand and diaphragm flatten
  - The digestion of food starts in the:-  
A. Stomach B. Mouth C. Ileum D. Colon
  - Which one is correct when spaying chemicals  
A. spray chemical near fire  
B. Spray chemicals against wind  
C. Spray chemicals towards the wind  
D. Spray chemicals while eating food
  - The first stage of HIV/AIDS is known as:-

- A. Symptomatic stage B. window stage  
 C. Full blown D. Incubation stage
25. The best way of young people to protect themselves from HIV/AIDS infection is by:-  
 A. Sharing cutting tools B. abstinence  
 C. Playing sex D. touching open wounds
26. Green non-flowering Non - green plants  
 Fern Toadstool  
 Algae X
- Which plant would **CORRECTLY** represents X?  
 A. Pawpaw B. Acacia C. Moss D. Mushroom



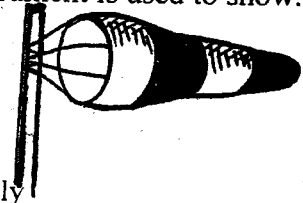
The above drawn plant stores food in the:-  
 A. Leaves B. Stem C. Root D. Branch

28. The loss of excess water through the leaves is called:-  
 A. Photosynthesis B. Germination  
 C. Transpiration D. Evaporation



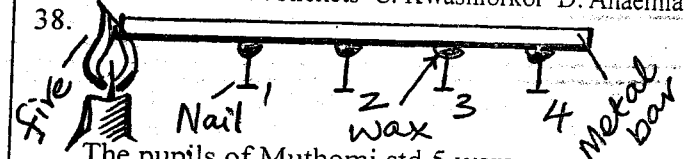
The above type of roots are called:-  
 A. Taproots B. Fibrous roots  
 C. Lateral roots D. Main root

30. The below drawn instrument is used to show:-



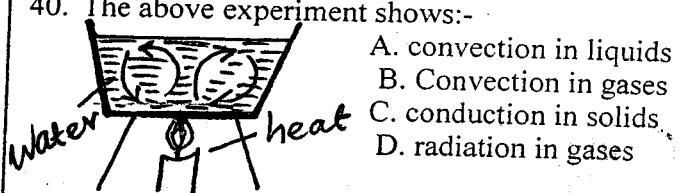
- A. strength of wind only  
 B. The temperature of surrounding  
 C. The humidity of surrounding  
 D. Strength and direction of wind
31. Temperature is measured using a:-  
 A. Thermometer B. Windsack C. Windvane D. Rainauge
32. These animals live partly in water and partly on land. The y are:-  
 A. Whale B. Fish C. Reptiles D. Amphibians
33. Which pair of animals have scales?  
 A. Birds and amphibians B. Reptiles and amphibians  
 C. Reptiles and mammals D. Reptiles and fish
34. The ability of water to pass downwards through the soil is called:-  
 A. Capillarity B. Water retention  
 B. Drainage D. Soil composition
35. Which soil has the highest capillarity?  
 A. Clay soil B. Loam soil  
 C. Sand soil D. Silt soil

36. Which group of food consists of vitamin only?  
 A. Sweet potatoes and tea B. Yams and arrowroots  
 C. Spinach and cabbages D. Mangoes and cabbages
37. Lack of proteins cause a disease known as:-  
 A. Marasmus B. Rickets C. Kwashiorkor D. Anaemia

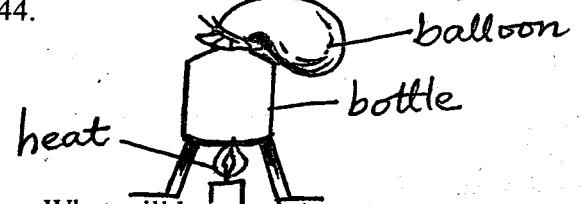


The pupils of Muthomi std 5 were investigating heat transfer in solids. which nail fell first?  
 A. 4 B. 3 C. 1 D. 2

39. The handle of a frying pan is usually made of:-  
 A. copper B. plastic C. iron D. aluminium



40. The above experiment shows:-  
 A. convection in liquids  
 B. Convection in gases  
 C. conduction in solids  
 D. radiation in gases
41. Which one of the following will Kamau a std 5 pupil not need when making a beam balance?  
 A. A stand B. String C. Nails D. Bottles
42. The liquid used in an ordinary thermometer is:-  
 A. Water B. Mercury C. Spirit D. Petrol
43. The process of changing ice to water is called:-  
 A. evaporation B. Melting C. Freezing D. Condensation



What will happen when the bottle is heated  
 A. The bottle will contract  
 B. The ballon will remain the same  
 C. The ballon will expand  
 D. The balloon will contract

45. Gaps are left between rails in a railway line to provide room for:-  
 A. Contraction B. Radition C. Convection D. Expansion
46. Water vapour  $\xrightarrow{Y}$  water  
 What process takes place at Y?  
 A. Condensation B. Evaporation  
 C. Freezing D. Melting
47. Matter exists in how many states  
 A. Three B. Four C. Two D. Five
48. Lack of iron in the blood will cause a disease called:-  
 A. Marasmus B. Rickets C. Typhoid D. Anaemia
49. When objects vibrate, they produce :-  
 A. Light B. Heat C. Sound D. cooling effect
50. Which one among the following is classified **WRONGLY**?  
 A. Nitrogen B. Petrol  
 C. Rare gases D. Carbondioxide

# JASMO SERIES

## STD. 5 TERM 1 - 2014

### MARKING SCHEME

<u>MATHS</u>	<u>ENGLISH</u>	<u>KISWAHILI</u>	<u>SCIENCE</u>	<u>S/STUDIES</u>	
1. D	1. B	1. C	1. D	1. D	51. D
2. A	2. A	2. A	2. B	2. C	52. A
3. B	3. D	3. D	3. C	3. C	53. B
4. C	4. C	4. C	4. A	4. C	54. B
5. A	5. A	5. B	5. B	5. C	55. B
6. B	6. B	6. A	6. C	6. C	56. C
7. A	7. D	7. D	7. A	7. B	57. A
8. D	8. A	8. B	8. D	8. A	58. C
9. B	9. C	9. C	9. A	9. B	59. B
10. A	10. B	10. A	10. D	10. D	60. A
11. B	11. B	11. C	11. D	11. B	
12. C	12. B	12. B	12. C	12. B	<u>C.R.E</u>
13. D	13. B	13. D	13. C	13. A	61. A
14. A	14. C	14. A	14. A	14. A	62. A
15. B	15. D	15. D	15. B	15. C	63. C
16. A	16. B	16. C	16. B	16. A	64. A
17. D	17. A	17. B	17. A	17. D	65. C
18. A	18. C	18. B	18. D	18. C	66. D
19. C	19. C	19. D	19. B	19. C	67. C
20. A	20. B	20. B	20. B	20. B	68. B
21. C	21. D	21. B	21. D	21. A	69. B
22. D	22. C	22. D	22. B	22. D	70. C
23. C	23. B	23. A	23. C	23. A	71. B
24. B	24. D	24. C	24. B	24.	72. C
25. D	25. A	25. A	25. B	25. C	73. D
26. A	26. C	26. B	26. D	26. A	74. C
27. B	27. D	27. C	27. A	27. D	75. C
28. C	28. B	28. C	28. C	28. D	76. A
29. B	29. C	29. D	29. B	29. B	77. C
30. D	30. C	30. A	30. D	30. A	78. A
31. A	31. B	31. B	31. A	31. C	79. C
32. C	32. D	32. C	32. D	32. B	80.
33. B	33. C	33. C	33. D	33. B	81. A
34. C	34. A	34. D	34. C	34. A	82. B
35. D	35. A	35. B	35. A	35. B	83. A
36. C	36. D	36. C	36. D	36. D	84. A
37. B	37. D	37. A	37. C	37. B	85. D
38. A	38. A	38. B	38. D	38. A	86. D
39. D	39. C	39. A	39. B	39. B	87. B
40. C	40. A	40. C	40. A	40. C	88. A
41. B	41. D	41. A	41. D	41. A	89. C
42. A	42. C	42. D	42. B	42. B	90. C
43. D	43. A	43. C	43. B	43. D	
44. B	44. C	44. C	44. C	44. D	
45. C	45. D	45. C	45. D	45. A	
46. B	46. A	46. A	46. A	46. C	
47. A	47. B	47. B	47. A	47.	
48. C	48. A	48. A	48. D	48. D	
49. B	49. C	49. D	49. C	49. B	
50. D	50. D	50. C	50. B	50. B	