



TIMER NATIONAL SERIES EVALUATION TEST STANDARD FIVE SCIENCE

Serial no. 0012014

Time: 1 hr. 40 mins

1. Which of the following is a poor conductor of heat?

- A. Water
- B. Iron
- C. Metal
- D. Copper

2. The process by which food is broken into small particles that can be absorbed by body into the blood is?

- A. Respiration
- B. Breathing
- C. Digestion
- D. Alimentary canal

3. Which is the use of phosphorus in our bodies.

- A. Helps in clotting
- B. Formation of strong bones and teeth
- C. Helps to make blood healthy
- D. Prevents deficiency diseases

4. Which one is a deficiency disease?

- A. Malaria
- B. Typhoid
- C. Measles
- D. Kwashiorkor

5. Reflected sound is called?

- A. Noise
- B. Melody
- C. Music
- D. Echo

6. Which is the sense organ of sight?

- A. Ear
- B. Skin
- C. Tongue
- D. Human beings

7. Animals that eat both plants and flesh are called?

- A. Herbivorous
- B. Carnivores
- C. Omnivores
- D. Human beings

8. Which of the following is the first phase of the moon?

- A. Crescent

B. New moon

C. Half moon

D. Full moon

9. Which of the following is a fibre crop?

- A. Cotton
- B. Coffee
- C. Maize
- D. Groundnuts

10. In which one of the following fluids is HIV not likely to be found?

- A. Semen
- B. Vaginal fluid
- C. Blood
- D. Urine

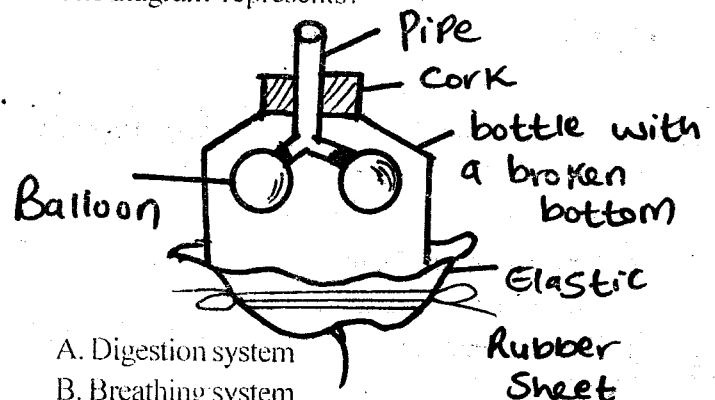
11. The types of teeth that we use to grind and chew are?

- A. Canines and incisors
- B. Canines and premolars
- C. Incisors and molars
- D. Premolars and molars

12. How many are the deciduous teeth?

- A. 32
- B. 12
- C. 24
- D. 20

13. The diagram represents?



- A. Digestion system
- B. Breathing system
- C. Rain gauge
- D. Balloons and bottle

14. The elastic rubber sheet represent?

- A. Chest
- B. Lungs

- C. Stomach
- D. Diaphragm

15. Which part of the digestion system does absorption of food take place?

- A. Stomach
- B. Ileum
- C. Colon
- D. Rectum

16. The worst stage of HIV infection is?

- A. Window stage
- B. Incubation stage
- C. Full blown stage
- D. Symptomatic stage

17. Class five collected the following materials.

- (i) metal sheet
- (ii) pieces of wood
- (iii) wire
- (iv) nail

What are they likely to make?

- A. Rain gauge
- B. Windsock
- C. Windvane
- D. Anemometer

18. Which of the following parts of the carrot is eaten?

- A. Leaves
- B. Stem
- C. Root
- D. Flowers

19. Which one of the following pairs of animals protect themselves by biting?

- A. Bee and wasp
- B. Cockroach and snails
- C. Spider and millipede
- D. Termites and ants

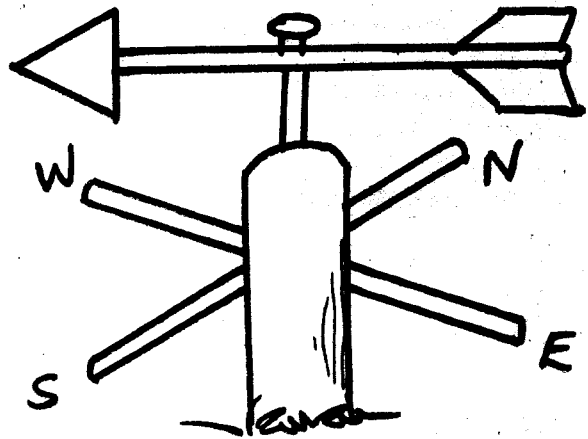
20. Cotton and sisal are examples of _____ crops?

- A. Fibre
- B. Vegetables
- C. Oil
- D. Beverage

21. Which among the following methods of storing water in large volumes?

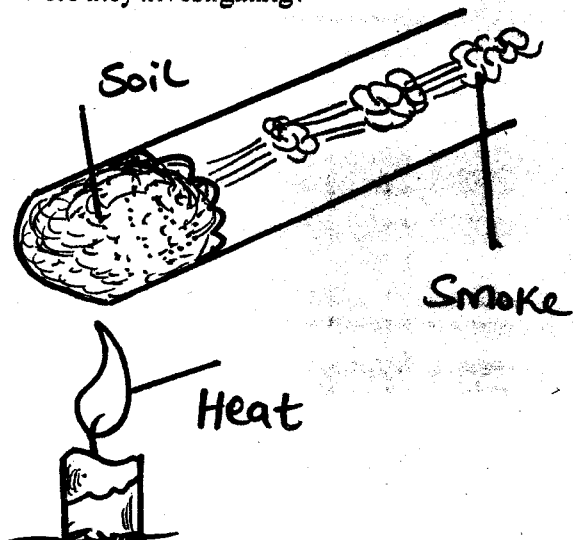
- A. Baskets
- B. Drums
- C. Pots
- D. Dams

22. The instrument below is used to show the direction of wind. It is called?



- A. Thermometer
- B. Windsock
- C. Windvane
- D. Barometer

23. The set up below was done by std 4 pupils. What were they investigating?



- A. Presence of smoke
- B. Soil can burn
- C. Presence of humus
- D. Presence of air

24. Which one of the following material is best for making handles for cooking pan?

- A. Metal

- B. Plastic
- C. Cloth
- D. Paper

25. The following are bad effects of moving air except?

- A. Winnowing
- B. Blowing away soil
- C. Felling trees
- D. Blowing roofs

26. Which of the following groups contains legumes only?

- A. Maize, beans, groundnuts
- B. Pigeons, peas, green grams, groundnuts
- C. Beans, peas, carrots
- D. Cassava, beans, millet

27. Among the following type of food which will provide use with energy to work?

- A. Tomatoes
- B. Chicken meat
- C. Carrots
- D. Cooked green bananas

28. Which body system is destroyed by the diseases causing germs?

- A. Digestive system
- B. Immune system
- C. Excretory system
- D. Breathing system

29. Wool is found in sheep while mohair is found in?

- A. Pigs
- B. Cows
- C. Hen
- D. Goats

30. In which part of the body does gaseous exchange takes place?

- A. Nose
- B. Ribs
- C. Diaphragm
- D. Lungs

31. Digestion of food begins in the?

- A. Small intestine
- B. Gullet
- C. Large intestine
- D. Mouth

32. Which one of the following is not an insect?

- A. Locust
- B. Spider
- C. Bee

D. Cockroach

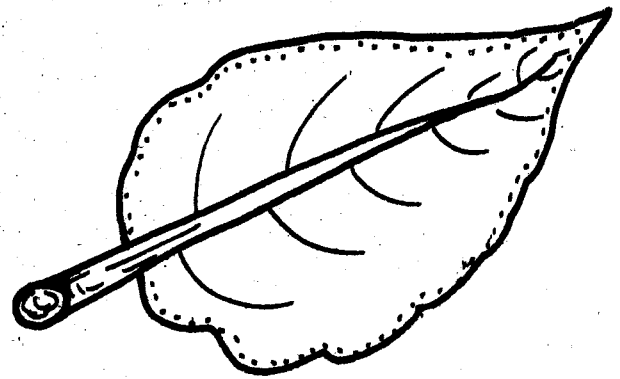
33. The digested food is absorbed in to the blood stream at?

- A. Rectum
- B. Small intestine
- C. Stomach
- D. Large intestine

34. What carries oxygen to all parts of the body?

- A. Liver
- B. Lungs
- C. Heart
- D. Blood

35. The part marked B is called?



- A. Leaf base
- B. Midrib
- C. Margin
- D. Apex

36. The ability of the body to fight against diseases is called?

- A. Syndrome
- B. Immunity
- C. Deficiency
- D. Humidity

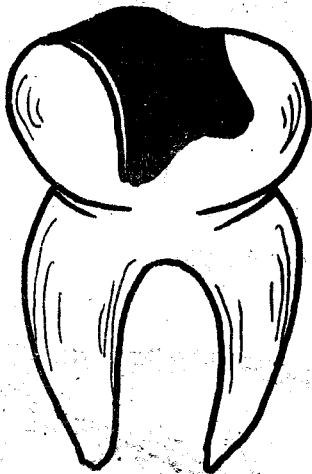
37. Undigestible food that is released from the body is also known as?

- A. Fibre
- B. Faeces
- C. Mucus
- D. Bolus

38. A third stage of HIV infection is called?

- A. Full blown AIDs
- B. Symptoms - showing stage
- C. Death stage
- D. Incubation

39. Which problem is shown in the diagram ?



- A. Cavities
- B. Bleeding gum
- C. Tooth decay
- D. Bad smell

40. Chemicals used to kill weeds are?

- A. Weedicides
- B. Herbicides
- C. Pesticides
- D. Insecticides

41. _____ is when one is unable to empty the bowel well.

- A. Digestion
- B. Deficiency
- C. Constipation
- D. Respiration

42. During breathing gaseous exchange usually takes place in the?

- A. Nose
- B. Lungs
- C. Trachea
- D. Air sacs

43. Which part of the breathing system is kept open by C-shaped rings?

- A. Trachea

B. Bronchioles

C. Lungs

D. Diaphragm

44. The changing of colours in chameleon help mostly in?

- A. Breathing
- B. Reproduction
- C. Protection
- D. Feeding

45. The animals that feed on both flesh and plants are called?

- A. Herbivores
- B. Omnivores
- C. Carnivores
- D. Ruminants

46. Which of the following is the main source of vitamin D?

- A. Fruits
- B. Vegetables
- C. Fats
- D. Sunlight

47. Which one of the following is a green non-flowering plant?

- A. Mango
- B. Mushroom
- C. Cypress
- D. Grass

48. The measuring cylinder of a rain gauge should be?

- A. Wide
- B. Tall
- C. Thick
- D. Narrow

49. Water vapour in the atmosphere is measured using?

- A. Thermometer
- B. Rain gauge
- C. Wind vane
- D. Hygrometer

50. Convection takes place in both _____ and _____.

- A. Gases and liquids
- B. Water and solids
- C. Gases and solids
- D. Liquids only