



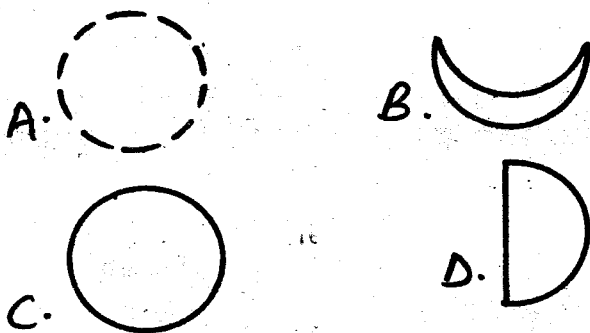
12. Which type of teeth are used for tearing the flesh?

- A. Canines
- B. Premolars
- C. Incisors
- D. Molars

13. Which of the following will spread HIV/AIDS ?

- A. Shaking hands
- B. Hugging friends
- C. Sharing cutting and piercing tools
- D. Kissing friends

14. Which of the following moons can not be seen in the sky?



15. The following are stages of HIV/AIDS infection. Which stage has no signs and one may test positive?

- A. Window
- B. Asymptomatic
- C. Full blown
- D. Symptomatic

16. Which of the following insects is useful to human beings?

- A. Bee
- B. Housefly
- C. Mosquito
- D. Butterfly

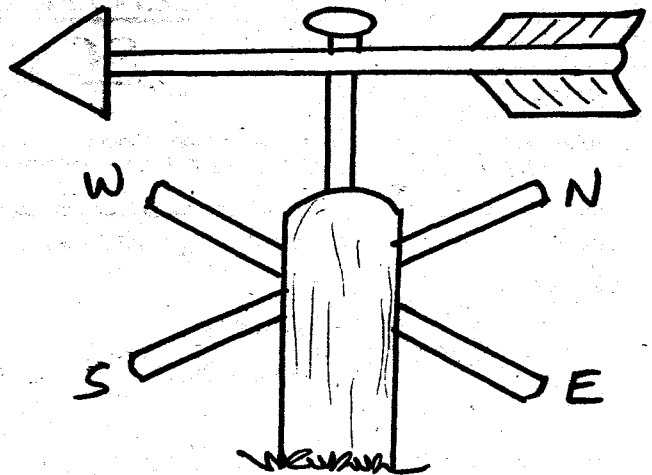
17. Study of weather is done in a

- A. weather forecast
- B. meteorology
- C. weather station
- D. weather changes

18. Medicine taken to cure diseases are known as

- A. painkillers
- B. vaccines
- C. antibiotics
- D. pain relievers

**Study the figure below and use it answer question 19**



19. The instrument drawn above is known as

- A. thermometer
- B. windsock
- C. rain gauge
- D. windvane

20. What do we call the clouds found low in the sky and they are a sign of rain?

- A. Cumulus
- B. Stratus
- C. Nimbus
- D. Cirrus

21. Which one of the following is a natural source of light ?

- A. Candle
- B. Electricity
- C. Gas lamp
- D. Fireflies

22. Vitamins are also known as

- A. energy giving foods
- B. protective foods
- C. proteins
- D. carbohydrates

23. Which one of the following is a source of vitamins ?

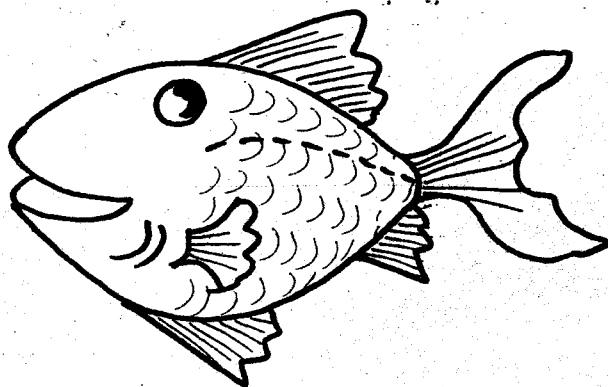
- A. Spinach
- B. Fish
- C. Eggs
- D. Bread

24. The following are characteristics of reptiles except ?

- A. They lay eggs
- B. They breathe by lungs
- C. They live partly in water and partly on land
- D. They have dry scales

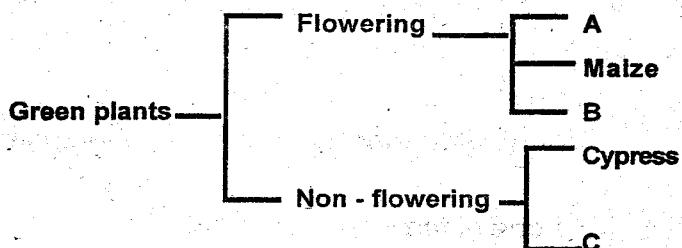
25. Which of the following is a balanced diet?  
 A. Rice, fish, milk  
 B. Greengrams, mango, pineapples  
 C. Mashed potatoes, ugali, milk  
 D. Ugali, kales, meat
26. Losing water from the body is known as  
 A. dehydration                      B. Constipation  
 C. starvation                         D. thirst
27. Which of the following will give us mutton?  
 A. Bull                                  B. Goats  
 C. Pig                                    D. Hen
28. Which of the following is a non-green plant?  
 A. Mushroom                        B. Fern  
 C. Algae                                 D. Maize

**Study the figure below and use it to answer questions 29 and 30**



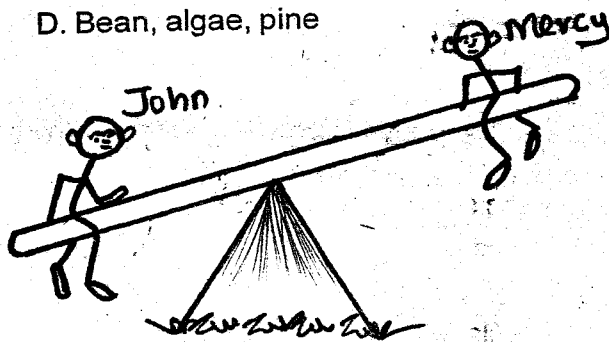
29. The body of the animal drawn above is covered by  
 A. scales                                B. fat  
 C. gills                                    D. fur
30. The animal drawn above reproduces by  
 A. giving birth                        B. laying eggs  
 C. cell division                        D. none of the above
31. Birds kept at home for production of eggs are known as  
 A. broilers                              B. hens  
 C. layers                                 D. poultry

32. Which is the edible part of a mango plant?  
 A. Roots                                 B. Stem  
 C. Fruits                                 D. Leaves
33. Which of the following diseases is caused by starvation?  
 A. Marasmus                         B. Anaemia  
 C. Kwashiorkor                      D. Rickets
34. Which of the following is a reason why we use medicine?  
 A. To add weight                    B. To be strong  
 C. For recreation                    D. To prevent diseases
35. The chart below is a simple classification of plants



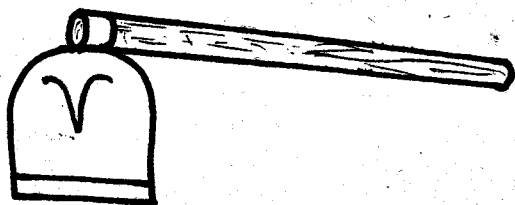
Which plants would fit at parts ABC respectively?

- A. Mushroom, mango, bean  
 B. Fungi, cedar, ferns  
 C. Bean, jacaranda, pine  
 D. Bean, algae, pine



36. Mercy and John balanced on a see saw as shown above. Who is heavier?  
 A. John                                 B. Mercy  
 C. They are the same                D. None of the above
37. Which of the following is the **odd** one out?  
 A. Grasshoppers                      B. Mosquitoes  
 C. Butterflies                         D. Ticks

38. The tool below is used in



- A. digging                      B. collecting rubbish  
C. sharpening tools      D. cutting

39. Mama John was advised to feed her baby with foods rich in proteins. The child was likely to be suffering from?

- A. Anaemia                      B. Rickets  
C. Kwashiorkor              D. Marasmus

40. Which of the following activities does not need heat?

- A. Ironing                      B. Warming ourselves  
C. Drying wet clothes      D. Taking photographs

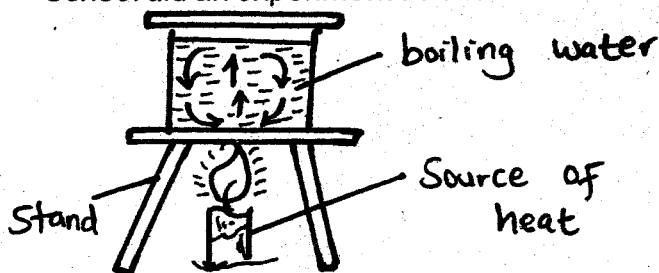
41. Which one of the following is not a recreation use of water?

- A. Boat racing                      B. Surfing  
C. Swimming                      D. Irrigation

42. Which one of the following materials is a good conductor of heat?

- A. Plastic                      B. Water  
C. Papers                      D. Nail

43. Standard five pupils from Machakos Primary School did an experiment as shown below



What were they investigating ?

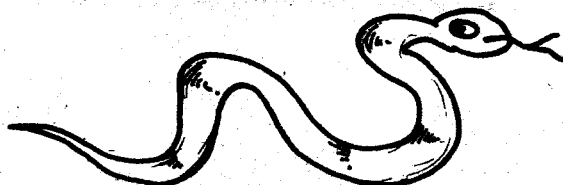
- A. Convection of heat in liquids  
B. Radiation  
C. Convection of heat in gases  
D. Conduction of heat in solids

44. Mutua makes cooking materials . Which of the following materials is best for making handles of the cooking materials ?

- A. Iron                      B. Aluminium  
C. Copper                      D. Wood

45. Which one of the following is an omnivore?

- A. Goat                      B. Zebra  
C. Tiger                      D. Pig



46. The animals drawn above moves by

- A. walking                      B. slithering  
C. crawling                      D. hopping

47. We use \_\_\_\_\_ to kill weeds.

- A. rat poison                      B. insecticides  
C. herbicides                      D. antiseptics

48. Why should a raingauge be raised above the ground ?

- A. To allow water to enter in easily  
B. To prevent splashing water from entering in  
C. To make it firm  
D To reduce evaporation

49. Which one of the following is not an importance of water in a diet?

- A. To prevent constipation  
B. To make blood  
C. To cool the body  
D. To transport food in the body

50. Unpleasant sound is called

- A. loud sound                      B. soft sound  
C noise                      D. volume