

# NYERI CENTRAL DISTRICT

## STANDARD FIVE TERM -2- YEAR 2011

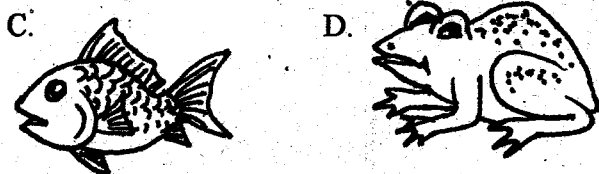
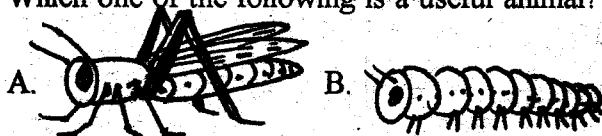
### SCIENCE

Time: 1 Hr 40 Mins

#### HOW TO USE THE ANSWER SHEET

1. Use only an ordinary pencil
2. Make sure that you have written on the answer sheet
  - (i) Your Name
  - (ii) Name of your school

1. Which one of the following is a useful animal?



2. Which of the following plants is used for making cooking oil?

- A. Sisal                      B. Sunflower  
C. Cotton                     D. Rice

3. The following are clearing tools **except**?

- A. Panga                      B. Axe  
C. Spade                      D. Slasher

4. The source of light drawn below is called a \_\_\_\_\_



- A. gas lamp                  B. tin lamp  
C. pressure lamp            D. lantern

5. The following are characteristics of dicotyledons.

Which one of them is **not**?

- A. They have fibrous roots  
B. Their seeds have two cotyledons  
C. Their leaves have veins that have a network  
D. The cotyledons come above the soil after germination

6. Which one of the following is **not** a property of soil?

- A. Soil capillarity            B. Soil profile  
C. Soil texture                D. Soil drainage

7. An animal has the following characteristics

- (i) has webbed feet  
(ii) streamlined body

How does the animal described above move?

- A. Flying through the air B. Swimming  
C. Crawling                    D. Hopping

8. Which one of the following is **not** a proper use of medicines?

- A. Buying medicine from shops  
B. Taking medicine when one is sick  
C. Avoiding taking and disposing expired medicines  
D. Separating medicines according to their uses and labelling their containers

9. Which one of the following **does not** show care and support for people infected with HIV/AIDS?

- A. They should be provided with a balanced diet  
B. They should be encouraged to observe good hygiene  
C. They should be isolated from other people  
D. They should be assisted with proper medical attention for example access to anti-retroviral drugs

10. Which one of the following is a sinker?

- A. A flat bottle top            B. Nail  
C. Leaf                         D. Stick

11. The **best** method of removing weeds is by \_\_\_\_\_.

- A. digging them out        B. slashing  
C. using chemicals         D. mulching

12. Std. 5 learners observed a weed that had purple flowers and yellow fruits had very strong thorns.

Which weed did the pupils see?

- A. Double thorn              B. Wandering jew  
C. Thorn apple                D. Sodom apple



25. Which of the following diseases is a nutritional deficiency disease?

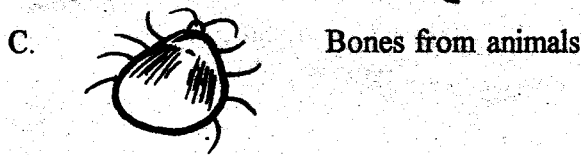
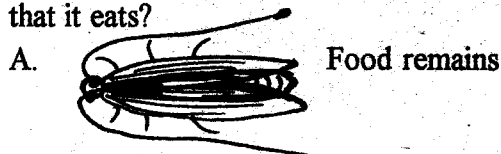
- A. Marasmus                      B. Mumps  
C. Cholera                         D. Malaria

26. Study the table below and answer the question below

A	B	C	D
Cereals	Legumes	Vegetable	Tuber
Cow peas	Beans	Pumpkins	Irishpotato

Which plant is wrongly grouped?

27. Which animal is wrongly matched with the food that it eats?



28. The house of a sheep is called a \_\_\_\_\_.

- A. shed                              B. pen  
C. sty                                 D. burrow

29. Std. 3 pupils observed thick, white, feathery clouds on a fine common weather which were made up of rounded masses and had a flat base. Which clouds did they observe?

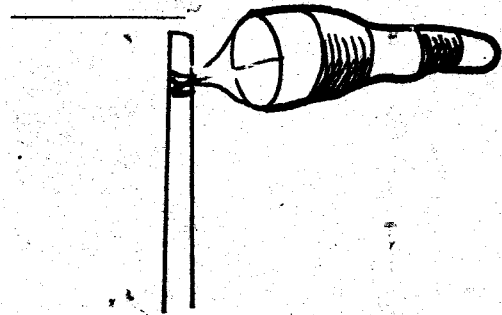
- A. Nimbus                         B. Stratus  
C. Cirrus                          D. Cumulus

30. How does this animal move?



- A. Crawls                            B. Glides  
C. Slithers                         D. Leaps

31. The weather instrument drawn below is used for



- A. measuring the speed of the wind  
B. showing the direction of the wind  
C. measuring the distance of the wind  
D. measuring the amount of wind that has blown

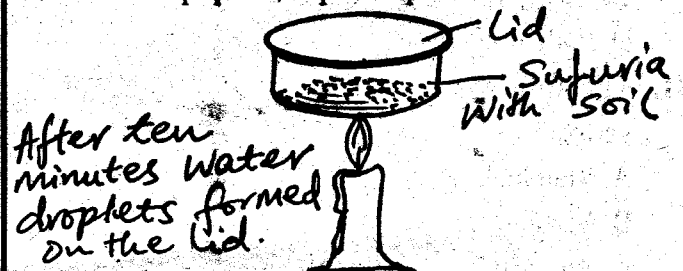
32. Clouds are grouped according to their height, shape and \_\_\_\_\_.

- A. weight                            B. appearance  
C. size                                D. colour

33. Chicken that are kept for eggs are called \_\_\_\_\_.

- A. poultry                            B. broilers  
C. layers                             D. capons

34. Std. 4 pupils set up an experiment as shown below



What were they investigating?

- A. Air in the soil  
B. Humus in the soil  
C. Water in the soil  
D. Living organisms in the soil

35. Which one of the following does not make up organic matter in the soil?

- A. Waste from animals  
B. Broken glass  
C. Dead rotting plants  
D. Dead parts of animals

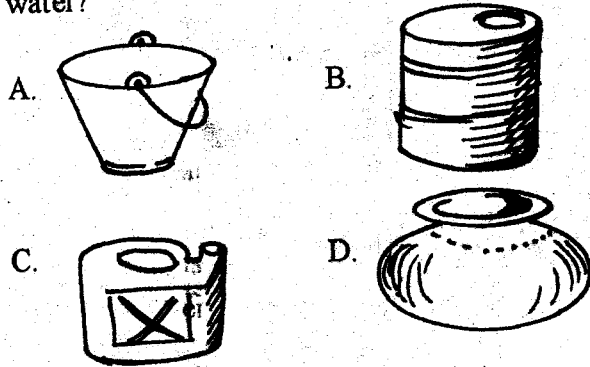
36. A \_\_\_\_\_ burrows the ground to make a home.

- A. grasshopper  
B. mole  
C. rabbit  
D. bat

37. The following are uses of heat except?

- A. Ironing  
B. Drying grains  
C. Drying clothes  
D. Keeping harmful animals away

38. Which one of the following would store very cold water?



39. Which one of the following animals is **wrongly** matched with the way it reacts to change?

- A. A lizard basks on a cold day
- B. A dog pants on a hot day
- C. A millipede recoils when it senses danger
- D. People wear light clothes on a cold day

40. Another name for protective foods is \_\_\_\_\_.

- A. vitamins
- B. proteins
- C. energy giving foods
- D. body building foods

41. The following are some characteristics of vertebrates. Which one is **not true**?

- A. Mammals and birds are both vertebrates
- B. Vertebrates live both on land and in water
- C. All vertebrates have backbones
- D. Some vertebrates have two backbones

42. \_\_\_\_\_ is a type of food that help in the digestive system.

- A. Water
- B. Fibre
- C. Proteins
- D. Vitamins

43. The following are functions of the roots in plants. Which one of them is **not**?

- A. Making food for the plant
- B. Breathing
- C. Absorbing mineral salts
- D. Absorbing water

44. Which of the statements below **best** describes what weeds are ?

- A. Plants that grow where they are not wanted
- B. Plants that grow on the farm
- C. Plants that grow together with crops in the farm
- D. Plants that take away food from the crops

45. Who of the girls below did **not** eat a balanced diet?

Mary: Maize + beans + cabbage

Jane : Rice + cow peas + vegetables

Joyce: Ugali + milk + ripe banana

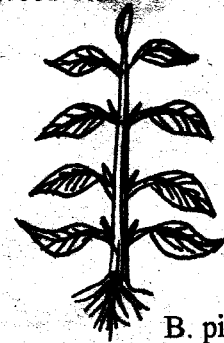
Bancy: Chapati + green grams + yams

- A. Jane
- B. Mary
- C. Bancy
- D. Joyce

46. One of the following is **not** a water recreational activity. Which one?

- A. Swimming
- B. Boat rowing
- C. Fishing
- D. Surfing

47. The type of weed drawn below is called \_\_\_\_\_.



- A. oxalis
- B. pig weed
- C. wandering jew
- D. sodom apple

**Use the weather chart below to answer questions 48 - 50**

Day	Morning	Afternoon
Monday	Sun, Wind	Rain, Wind
Tuesday	Cloud, Wind	Rain
Wednesday	Rain, Wind	Sun
Thursday	Sun, Wind	Sun, Trees
Friday	Rain, Trees	Cloud, Wind

48. Which was the **best** day to wash clothes?

- A. Monday
- B. Wednesday
- C. Thursday
- D. Tuesday

49. On which morning would a windvane **not** be used?

- A. Tuesday
- B. Monday
- C. Friday
- D. Thursday

50. On which day didn't the pupils carry umbrellas to school?

- A. Thursday
- B. Monday
- C. Wednesday
- D. Friday