

# STD. 5 END TERM -II- YEAR 2008

## SCIENCE

### HOW TO USE THE ANSWER SHEET

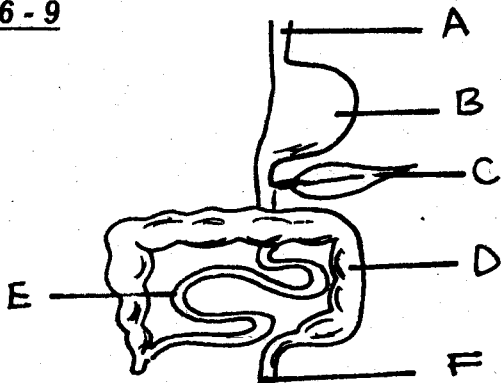
1. Use only an ordinary pencil
2. Make sure that you have written on the Answer Sheet  
(i) YOUR NAME (ii) NAME OF YOUR SCHOOL

Time: 1hr 40 mins

1. When we breath in air, the diaphragm  
A. Moves upwards B. Moves downwards  
C. Moves sideways D. Moves across
2. Another name for trachea is \_\_\_\_\_  
A. Gullet B. Windpipe  
C. Colon D. Oesophagus
3. What is the function of canines?  
A. Cutting and biting B. Gripping and tearing  
C. Crushing D. Grinding
4. The following are problems related to teeth  
except?  
A. Bad smell B. Gingivitis  
C. Cavities D. Strong teeth
5. A kind of tooth with two roots fixed into the jaw  
bone is called?  
A. Molar B. Incisor  
C. Premolar D. Canine

### Use the diagram below to answer questions

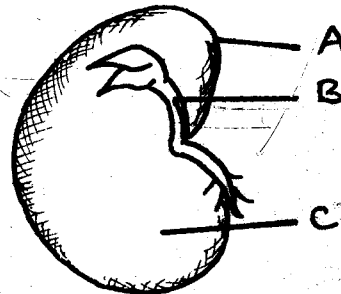
6 - 9



6. The part marked A is called the?  
A. Mouth B. Gullet C. Trachea D. Rectum
7. Absorption of food takes place in part  
A. B B. C C. D D. E
8. The part marked C is called?  
A. Ileum B. Stomach  
C. Pancreas D. Rectum
9. The part marked F is called?  
A. Anus B. Mouth  
C. Oesophagus D. Small intestines
10. A person who is HIV negative is  
A. A person who has AIDS  
B. A person who is not affected by AIDS  
C. A person who has HIV  
D. A sick person
11. Which of the following groups contains non-  
flowering plants only?  
A. Fern, mushroom, tea  
B. Moss, fern, mushroom  
C. Moss, fern, maize  
D. Coffee, fern, mushroom

12. The medicines which help to cure disease are  
called?  
A. Curatives B. Preventives  
C. Herbicides D. Detergents
13. The part of the plant which makes food is the  
A. Root B. Stem C. Flower D. Leaf
14. The roots which are above the ground level are  
called?  
A. Fibrous roots B. Aerial roots  
C. Main D. Tap roots

### Use the diagram of a bean below to answer questions 15 - 17



15. The part marked B is called the \_\_\_\_\_  
A. Radicle B. Plumule  
C. Cotyledon D. Microphyle
16. The part marked B grows to become the \_\_\_\_\_  
A. Shoot B. Roots C. Plant D. Seedling
17. The part marked C is called the \_\_\_\_\_  
A. Cotyledon B. Testa  
C. Food D. Radicle
18. The moon which is **not** visible from the earth is  
A. Crescent B. New moon  
C. Full moon D. Gibbous
19. Scientists who study weather are called  
A. Weather station B. Weather forecast  
C. Meteorologists D. Meteorology
20. Which one of the following is **not** an invertebrate?  
A. Bat B. Crab C. Fish D. Frog
21. Mammals and \_\_\_\_\_ belong to the same  
group of animals that are warm blooded.  
A. Reptiles B. Birds C. Fish D. Amphibians
22. Fish breath through the \_\_\_\_\_  
A. Lungs B. Gills C. Lateral lines D. Skin
23. The \_\_\_\_\_ is an example of an egg-laying mammal.  
A. Lizard B. Whale  
C. Spiny-ant-eater D. Frog
24. The \_\_\_\_\_ is not an example of a mammal.  
A. Whale B. Porpoise C. Dolphin D. Stork
25. Lack of vitamin C causes \_\_\_\_\_  
A. Beriberi B. Scurvy  
C. Kwashiorkor D. Marasmus

