

# STANDARD FIVE EVALUATION TEST SCIENCE

2015

PACEMAKER  
SERIES - 006

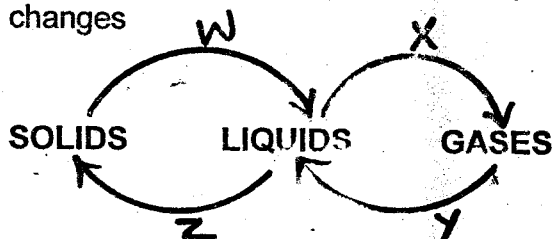
**HOW TO USE THE ANSWER SHEET**

1. Use only an ordinary pencil
2. Make sure that you have written on the Answer Sheet
  - (i) YOUR NAME
  - (ii) NAME OF YOUR SCHOOL

Time:-1Hr 40Mins

1. The date after which medicine should not be used is called ?
  - A. Manufacturing date
  - B. Expiry date
  - C. Delivery date
  - D. Dosage

2. The flow chart below shows changes of state of matter, when subjected to temperature changes

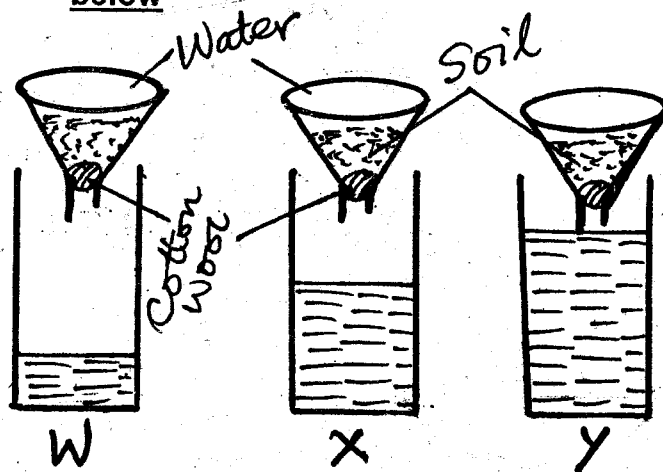


Which two processes require an increase in temperature for them to take place ?

- A. W, Z
  - B. X, Y
  - C. W, X
  - D. Z, Y
3. The part that represents melting is ?
  - A. X
  - B. W
  - C. Y
  - D. Z
4. Which one of the following plants listed below is not a fungi ?
  - A. Moss
  - B. Mucor
  - C. Toadstool
  - D. Mushroom
5. Which group below consists of only beverage crops ?
  - A. Sunflower, maize, cocoa
  - B. Coconut, groundnuts, sunflower
  - C. Tea, coffee, cocoa
  - D. Sisal, cotton, flax
6. A person who works in a noisy place should wear all the following to protect himself from noise pollution except ?
  - A. Ear muffs
  - B. Ear defenders
  - C. Ear phones
  - D. Ear plugs

7. Fibre in the food helps to prevent
  - A. dehydration
  - B. deficiency diseases
  - C. constipation
  - D. rickets
8. To take accurate results in a rain gauge, the rain water collected should be measured
  - A. once a week
  - B. after every hour
  - C. twice a day
  - D. at the same time everyday
9. The type of clouds which look like bundles of cotton and indicate fine weather are
  - A. cumulus
  - B. cirrus
  - C. nimbus
  - D. stratus
10. The process through which plants lose water through their leaves is called ?
  - A. Respiration
  - B. Transpiration
  - C. Absorption
  - D. Photosynthesis
11. Materials that burn in form of fire to produce heat are called ?
  - A. Firewood
  - B. Kerosene
  - C. Diesel
  - D. Fuels

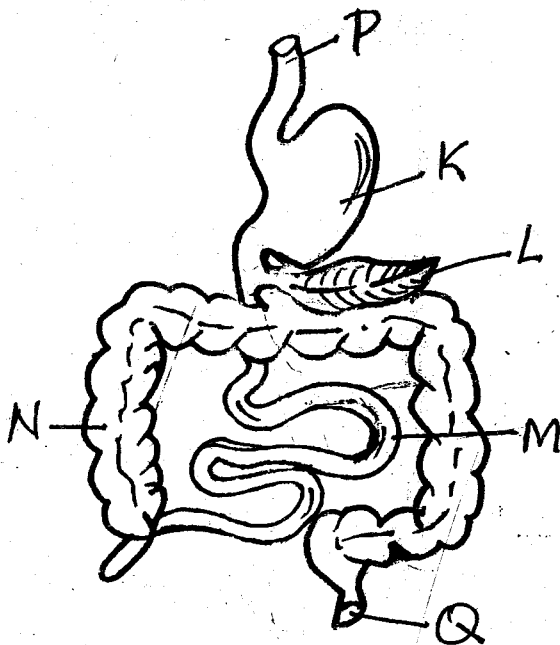
Class five pupils set up the experiment below



12. The experiment was set up to investigate ?
  - A. texture in soil
  - B. capillarity in soil
  - C. drainage in soil
  - D. water in the soil

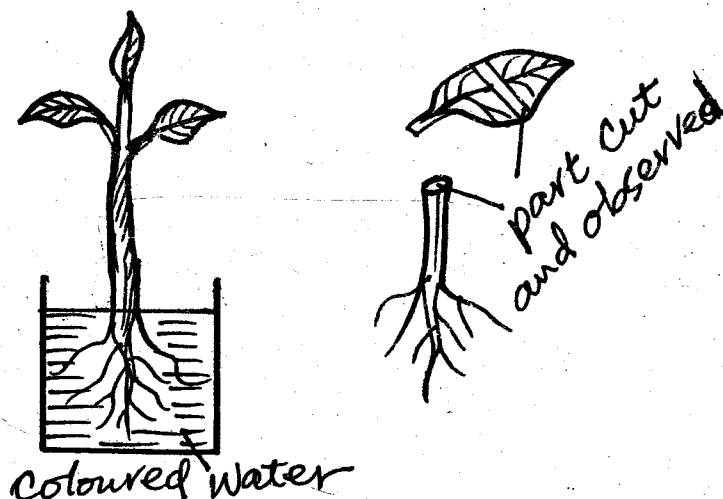
13. From the above, which soil is represented by W?  
 A. Sandy soil                      B. Clay soil  
 C. Loam soil                        D. Gravels
14. Which one of the following states of matter expands most on heating?  
 A. Solids                              B. Liquids  
 C. Gases                                D. Solids and liquids
15. A baby class pupil was found to have the following signs and symptoms.  
 - **Dizziness**  
 - **Fainting**  
 - **Paleness of the palm and fingernails**  
 The child was likely to be suffering from?  
 A. Kwashiorkor                      B. Marasmus  
 C. Anaemia                            D. Rickets
16. Which one of the following body fluids does not transmit HIV/AIDS?  
 A. Blood                                B. Saliva  
 C. Urine                                 D. Breast milk
17. The name given to curative medicine is?  
 A. Vaccines                            B. Painkillers  
 C. Antibiotics                         D. Drugs
19. Digestion of food ends in the part labelled?  
 A. N                                        B. K  
 C. M                                        D. Q
20. In which part is water and mineral salts from the food absorbed?  
 A. P                                        B. N  
 C. L                                        D. M
21. The stem of a plant has the following functions **except**?  
 A. Transporting water  
 B. Transporting manufactured food from leaves  
 C. Anchoring the plant firmly  
 D. Holding the branches and flowers in position for their functions
22. The following are sources of water **except**?  
 A. Tap                                      B. Dam  
 C. River                                    D. Rainfall
23. Which of the following statements is true about earthworms, snakes and fish?  
 A. They live in the soil  
 B. They don't have legs  
 C. They all live in water  
 D. They have scales
24. The process of transferring blood from one person to another is called?  
 A. Blood donor  
 B. Blood transfer  
 C. Blood transfusion  
 D. Blood piping
25. Pupils carried out an experiment in a plant as shown below

**Study the diagram below and answer questions 18 -20**



18. The tube running from P to Q used as food passage and where digestion takes place is called?  
 A. Respiratory system    B. Oesophagus  
 C. Alimentary canal      D. Food pipe

25. Pupils carried out an experiment in a plant as shown below



After sometimes, the pupils cut the parts shown and observed some coloured patches. This was to investigate ?

- A. Transpiration
- B. Absorption
- C. Transportation
- D. Photosynthesis

26. Which type of teeth is correctly matched with its function ?

- A. Incisors - tearing and cutting
- B. Canines - piercing and tearing
- C. Pre - molars - cutting and chewing
- D. Molars - tearing and chewing

27. Which one of the following is **not** a problem related to teeth ?

- A. Bad breath
- B. Dental floss
- C. Dental carries
- D. Gingivitis

28. Heat is used in all the following **except** ?

- A. Cooking
- B. Lighting
- C. Ironing
- D. Drying

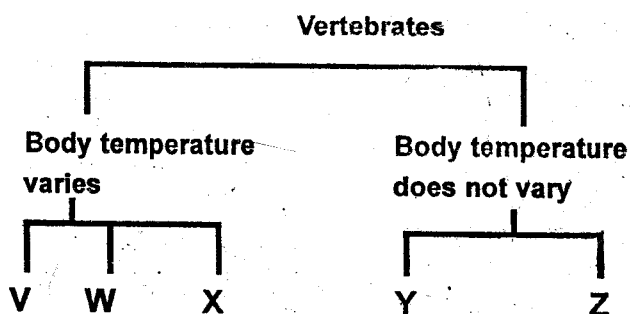
29. The extent through which soil feels smooth or rough is referred to as

- A. coarseness
- B. soil texture
- C. profile
- D. smoothness

30. Tools can be maintained in the following ways **except** ?

- A. Greasing and oiling
- B. Cleaning them after use
- C. Using a panga to do any work
- D. Using tools for their right purpose

The following chart indicates a classification of vertebrates



31. In which group would you place frog and crocodile ?

- A. W and Z
- B. V and X
- C. Y and V
- D. Z and Y

32. A child with sores at the corners of the mouth, has brownish hair and a pot-bellied stomach is likely to be suffering from ?

- A. Kwashiorkor
- B. Marasmus
- C. Anaemia
- D. Rickets

33. Lack of iron in the body leads to a deficiency disease called ?

- A. Rickets
- B. Marasmus
- C. Anaemia
- D. Kwashiorkor

34. The sun rises in the \_\_\_\_\_ and sets in the \_\_\_\_\_

- A. West, East
- B. South, North
- C. East, West
- D. North, South

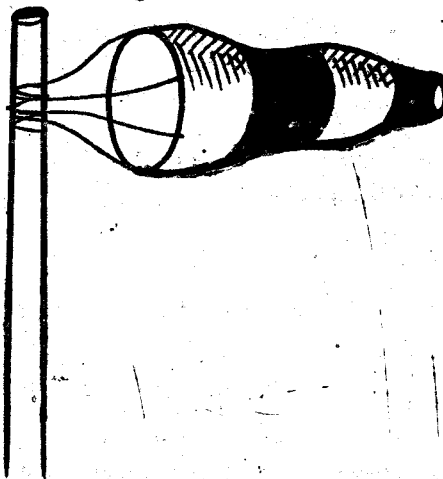
35. During breathing in, the diaphragm in human beings :

- A. move upwards and outwards
- B. flattens
- C. moves downwards and inwards
- D. becomes dome shaped

36. The quantity of matter in an object is known as

- A. weight
- B. mass
- C. kilograms
- D. beam balance

37. The diagram below shows a weather instrument



The instrument is used to measure

- A. the speed of wind
- B. air temperature
- C. direction and strength of wind
- D. direction of wind only

38. Which one of the following plants is a stem tuber?

- A. Sugarcane
- B. Sweet potato
- C. Cassava
- D. Carrot

39. The air we breathe in is cleaned, warmed and moistened in the

- A. mouth
- B. nose
- C. lungs
- D. bronchus

40. Which one of the following plants is a non-green plant?

- A. Fern
- B. Mould
- C. Moss
- D. Cactus

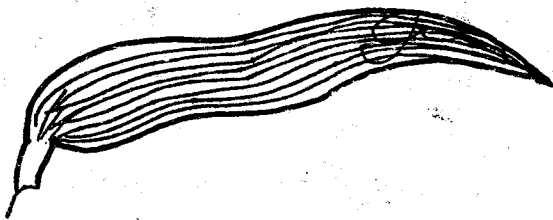
41. The rising up of water in the soil is known as

- A. Drainage
- B. Capillarity
- C. retention
- D. Texture

42. The poultry kept for meat are called

- A. layers
- B. broilers
- C. beef
- D. cocks

43. The leaf below belongs to which plant?



- A. Avocado
- B. Peas
- C. Beans
- D. Maize

44. Which pairs of food when eaten provides the body with energy?

- A. Beef and chicken
- B. Avocado and groundnuts
- C. Potatoes and cabbage
- D. Rice and peas

45. The mineral that is important for strong bones and teeth is?

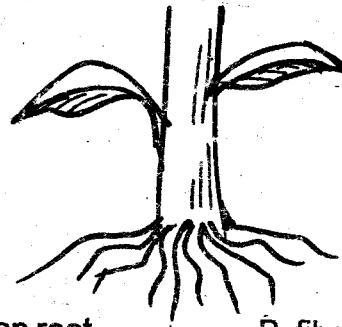
- A. Calcium
- B. Iodine
- C. Iron
- D. Vitamin K

46. The following animals are all vertebrates except

one. Which one is it?

- A. Snake
- B. Whale
- C. Locust
- D. Newt

47. Name the type of root system shown below

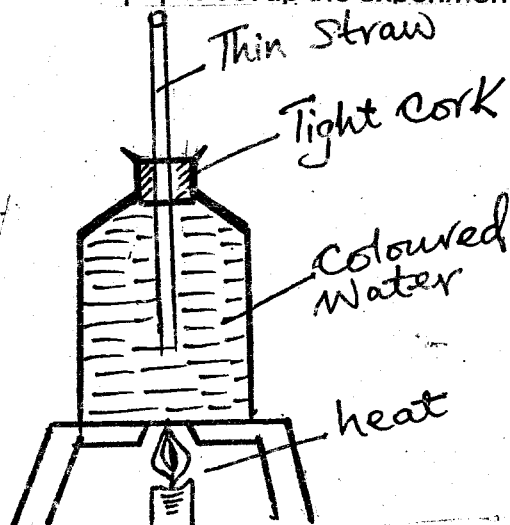


- A. tap root
- B. fibrous root
- C. prop root
- D. root hairs

48. The main reason why there are gaps left in railway lines during construction is to

- A. save materials used during construction
- B. reduce speed of the train
- C. create room for expansion and contraction
- D. make the railway line beautiful

49. Std 5 pupils set up the experiment below



After the experiment pupils concluded that

- A. liquids occupy space
- B. gases expand when heated
- C. liquids expand when heated
- D. matter has weight

50. Muchiri was warming himself besides a big fire. The heat reached him through a process called?

- A. Convection
- B. Conduction
- C. Radiation
- D. Conduction and convection