

THE TIMER NATIONAL SERIES EVALUATION TEST



Code no. 008

STD 4 TERM III 2013

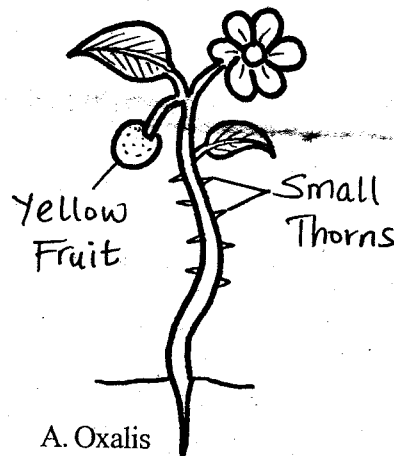
SCIENCE

4

TIME 1HR 40MINS

1. Clay soil is best for?
 - A. Modelling
 - B. Building
 - C. Animals
 - D. farming
2. People wear heavy clothes when the weather is?
 - A. Hot
 - B. Cold
 - C. Sunny
 - D. Windy
3. Which of the following animals use its shell to hide itself?
 - A. Snail
 - B. Housefly
 - C. Grasshopper
 - D. Locust
4. Moon and stars are seen clearly in the sky at
 - A. Noon
 - B. Night
 - C. Sunny
 - D. Afternoon
5. A place where plants grow naturally is called?
 - A. Habitat
 - B. Water
 - C. Soil
 - D. Flower
6. Which of the following is needed during germination?
 - A. Water
 - B. Plant
 - C. Soil
 - D. Flower
7. The farmer prepares land for planting in the _____ season?

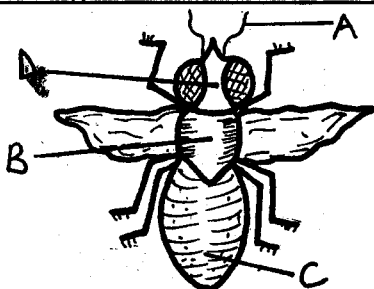
- A. Hot
 - B. Cold
 - C. Dry
 - D. Wet
8. The ability to see is ?
 - A. Hear
 - B. Walking
 - C. Sight
 - D. Touch
 9. The type of weed drawn below is?



- A. Oxalis
 - B. Wandering jew
 - C. Sodom apple
 - D. Thorn apple
10. Gestures are _____ that people make with their bodies to tell others something.
 - A. noises
 - B. movements
 - C. words
 - D. hands
 11. A bee _____ the enemy in order to scare it away.
 - A. bites
 - B. eats
 - C. stings
 - D. kills

12. The birds move by _____?
- swimming
 - hopping
 - flying
 - crawling
13. The house of a rabbit is called _____?
- school
 - kennel
 - hutch
 - boma
14. A rain gauge measures _____?
- rainfall
 - temperature
 - wind
 - air
15. Many people use simple tools to make work?
- Heavy
 - Easier
 - Difficult
 - Done
16. You should brush your teeth after every?
- Juice
 - Water
 - Meal
 - Tea
17. Pedestrian walk on which side of the road?
- left
 - Right
 - Right and Left
 - None

Use the diagram below to answer question 18-20



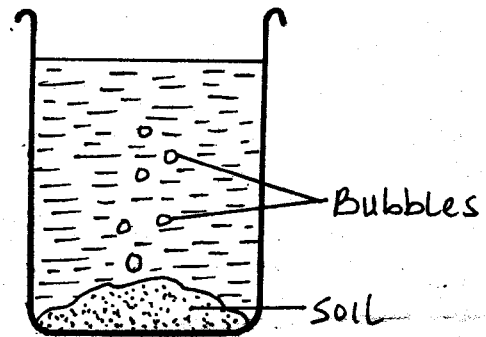
18. The part marked D is the?
- Abdomen
 - Thorax
 - Head
 - Spine
19. The part marked C is the?
- Thorax
 - Abdomen
 - Head
 - Hair
20. The part marked A is?
- Head
 - Horn
 - Antenna
 - Hair
21. The part marked B is the?
- Antenna
 - Head
 - Thorax
 - Abdomen
22. Moving air is called?
- Wind
 - Calm
 - Sun
 - Wind air
23. Animals that feed on meat only are called?
- Omnivores
 - Herbivores
 - Carnivores
 - Meteorite
24. Cattle kept for meat are called?
- Meaty
 - Pork
 - Beef
 - Dairy
25. Which of the following is not a weed?

- A. Sodom apple
B. Oxalis
C. Sweet potatoes
D. Blackjack
26. Turkeys, goose, hen and ducks are called?
A. Chicken
B. Animals
C. Poultry
D. Birds
27. A person who grows crops and keeps animals is called a?
A. Dentist
B. Farmer
C. Barber
D. Grocer
28. Bees give us _____?
A. sugar
B. honey
C. meat
D. juice
29. A person who eats a balanced diet is strong and ____?
A. happy
B. healthy
C. clever
D. very fast
30. Which of the instruments is correctly matched with the element it measures?
A. Thermometer - Temperature
B. Rain gauge - Humidity
C. Windvane - Speed of wind
D. Barometer - Rainfall
31. To drive in nails on a piece of wood we use?
A. Saw
B. Ladder
C. Hammer
D. Screw driver.
32. Water is used to do the following except?
A. Bathing
B. Drinking
C. Washing
D. Breathing
33. The sense organ for hearing is the _____?
A. nose
B. tongue
C. eye
D. ear
34. An adult has _____ teeth?
A. 20
B. 42
C. 32
D. 24
35. Which of the following is a recreational use of water?
A. Swimming
B. Cooling machines
C. Watering crops
D. Cleaning farm tools
36. The best soil for agriculture is _____?
A. Loam
B. Sand
C. Clay
D. Clay and sand
37. Animals that eat both plants and flesh are called ____?
A. Omnivores
B. Herbivores
C. Flesh eaters
D. Carnivores
38. The feaces from birds, goats and sheep is called ____?
A. Dung
B. Bolus
C. Droppings
D. Pellets
39. Which soil drains water quickly?

- A. Sand
 - B. Loam
 - C. Clay
 - D. Humus
40. The disease without cure is called _____?
- A. Cold
 - B. Headache
 - C. AIDs
 - D. Malaria
41. The following are sources of water. Which one is not?
- A. Rivers
 - B. Wells
 - C. Lamp
 - D. Springs
42. Shiny objects are good _____?
- A. Reflectors
 - B. Transparent
 - C. Opague
 - D. Refractors
43. People who see close objects are called _____?
- A. long sighted
 - B. blind
 - C. deaf
 - D. short sighted
44. A true insect has _____ body parts?
- A. 6
 - B. 3
 - C. 4
 - D. 8
45. We should treat drinking water to kill _____?
- A. Cows
 - B. Germs
 - C. Flies
 - D. Malaria
46. _____ is a natural source of light?
- A. Sun

- B. Candle
- C. Torch
- D. Electricity

47. Mosquitoes causes a disease called _____?
- A. Aids
 - B. Stomachache
 - C. Malaria
 - D. Nose bleeding
48. Std 4 pupils set up the experiment below:



What were they trying to find out?

- A. Water in soil
 - B. Air in soil
 - C. Living things in soil
 - D. Organic matter in soil
49. The colour of a clear sky is?
- A. White
 - B. Blue
 - C. Grey
 - D. green
50. Sound travels in _____ directions.
- A. four
 - B. none
 - C. three
 - D. all