

# CONTINUOUS ASSESSMENT TEST

## STANDARD FOUR END TERM 1 - 2009

### SCIENCE

#### HOW TO USE THE ANSWER SHEET

1. Use only an ordinary pencil
2. Make sure that you have written on the Answer Sheet  
(i) YOUR NAME      (ii) NAME OF YOUR SCHOOL

Time: 1hr 40 mins

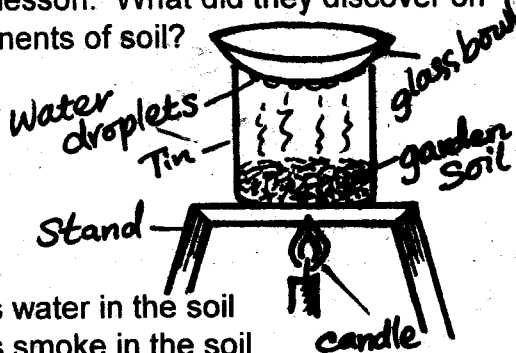
1. Which one of the given sources of heat below is the **main** source of heat?

- A. Fire                                      B. Gas cooker  
C. Sun                                        D. Torch

2. When water is used for bathing, it \_\_\_\_\_

- A. Cools the body  
B. Removes dirt from the body  
C. Helps to kill germs  
D. Does not get finished

3. Standard 4 pupils made the set up below during a Science lesson. What did they discover on the components of soil?



- A. There is water in the soil  
B. There is smoke in the soil  
C. There are living things in the soil  
D. There is air in the soil

4. When clay soil is burnt for long time, it changes its colour to \_\_\_\_\_

- A. Blue                                      B. Red  
C. Yellow                                    D. Black

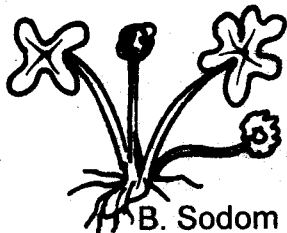
5. One of the following animals burrows the soil to make a home. Which animal is it?

- A. Rabbit                                    B. Bedbug  
C. Grasshopper                          D. Mole

6. Which of the animals below hides in their shells when touched?

- A. Millipedes and centipedes  
B. Hedgehogs and rabbits  
C. Snails and tortoises  
D. Snakes and cockroaches

7. The diagram below shows a common weed. It is called?



- A. Oxalis                                    B. Sodom apple  
C. Wandering jew                        D. Pigweed

8. Which one of the following is a domestic use of water?

- A. It is used for ferrying people  
B. It is used for watering crops  
C. It is used for fishing  
D. It is used for cleaning utensils

9. Animal droppings are sources of \_\_\_\_\_

- A. Fertilizer                                B. Milk  
C. Manure                                    D. Food

10. One of the given phases below is the first phase of the moon. Which one is it?

- A. New moon                                B. Crescent  
C. Full moon                                D. Half moon

11. Which one is **true** about plants?

- A. Leaves do not make plant food  
B. Seeds germinate when there is air, water and warmth  
C. Roots grow upwards  
D. Plants move from one place to another

12. Which one of the following animals lives in water?

- A. Mouse                                      B. Lizard  
C. Ostrich                                    D. Fish

13. The animal drawn below provides us with \_\_\_\_\_



- A. Milk and manure                        B. Head and tail  
C. Meat and eggs                          D. Skin and meat

14. All the following are functions of the stems in plants. Which one is **not**?

- A. They store food in some plants  
B. They support the leaves and fruits  
C. They transport water and mineral salts from the roots  
D. They hold the plant firmly in the soil

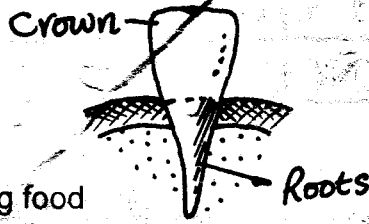
15. Which one of the following is **not** an effect of heat on a substance?

- A. Heat raises the temperature  
B. Heat changes liquids to vapour  
C. Heat causes cooling  
D. Heat causes melting

16. A millipede protects itself by \_\_\_\_\_

- A. Stinging                                    B. Coiling  
C. Running away                          D. Changing its colour

17. The diagram represents a certain type of human tooth. This type of tooth is used for ?



- A. Tearing food  
 B. Cutting and biting food  
 C. Grasping and grinding food  
 D. Grinding food
18. The birds kept for producing eggs are known as \_\_\_\_\_  
 A. Poultry  
 B. Capons  
 C. Broilers  
 D. Layers
19. A grasshopper is an insect. It moves by \_\_\_\_\_  
 A. Walking  
 B. Hopping  
 C. Flying  
 D. Crawling
20. Which one of the following is a recreational use of water?  
 A. Cooling machines  
 B. Swimming  
 C. Watering plants  
 D. Washing clothes
21. Which one of the following is **not** a problem related to teeth?  
 A. Dental carries  
 B. Bleeding gums  
 C. Dental cavities  
 D. Exercise
22. Dead animals and plants form \_\_\_\_\_ in the soil when they rot and decay.  
 A. Humus  
 B. Minerals  
 C. Stones  
 D. Moisture
23. The HIV virus is found in three of the following body fluids **except**?  
 A. Blood  
 B. Semen  
 C. Urine  
 D. Vaginal fluid
24. \_\_\_\_\_ means the condition of the atmosphere of a given place at a particular time.  
 A. The sky  
 B. The surrounding  
 C. Temperature  
 D. Weather
25. Which one of the following statements describes weeds?  
 A. Plants that grow where they are wanted  
 B. Plants that give us cash crops and food crops  
 C. Plants that grow where they are not wanted  
 D. Plants that grow with food crops
26. As some pupils were walking home from school, they looked up the sky and observed thick white feathery clouds as shown below.



These clouds are the \_\_\_\_\_

- A. Nimbus clouds  
 B. Stratus clouds  
 C. Cumulus clouds  
 D. Cirrus clouds

27. Below are examples of legume crops. Which one is **not**?

- A. Millet  
 B. Beans  
 C. Groundnuts  
 D. Peas

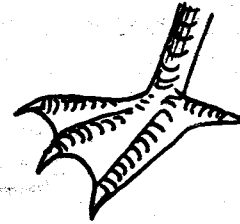
28. Some crops are used to make cooking oil and fat. Which one of the following is **not** an oil crop?

- A. Simsim  
 B. Cotton  
 C. Cassava  
 D. Groundnuts

29. A sickel is a tool used for the following work. Which one is it?

- A. Collecting cut grass  
 B. Cutting wool from sheep  
 C. Driving in screws into wood  
 D. Harvesting rice and cutting grass

30. One of the following birds has the kind of feet shown below. Which one is it?



- A. Hen  
 B. Bat  
 C. Duck  
 D. Cock

31. You can get the HIV virus through the following ways **except**?

- A. Blood transfusion  
 B. Deep kissing  
 C. Sharing razor blades  
 D. Hugging

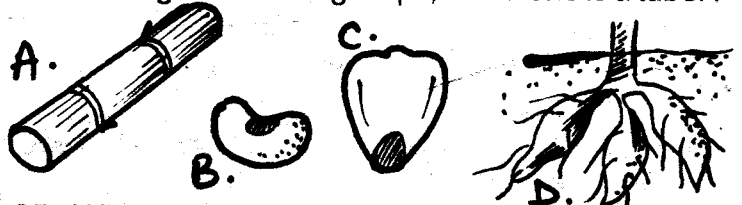
32. Which part of a plant is more important than the others?

- A. Stems  
 B. Roots  
 C. Leaves  
 D. None

33. Which one of the following methods can be used to remove all weeds in a farm?

- A. Digging out  
 B. Planting  
 C. Killing as you walk  
 D. Grazing

34. Among the following crops, which one is a tuber?



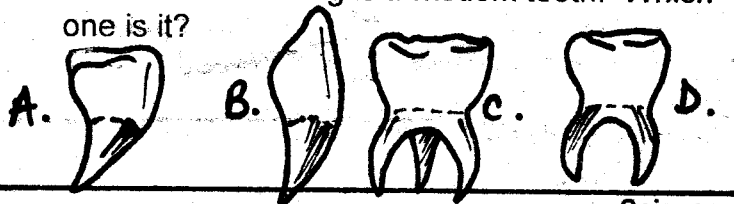
35. Which one of the following terms means "Lack of or without?"

- A. Disease  
 B. Hungry  
 C. Deficiency  
 D. None

36. When you feed on the correct amount of vitamins, carbohydrates and proteins, we say you have taken \_\_\_\_\_

- A. Too much food  
 B. Good health  
 C. Good protection  
 D. Balanced diet

37. One of the following is a wisdom tooth. Which one is it?



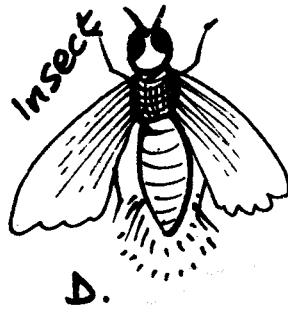
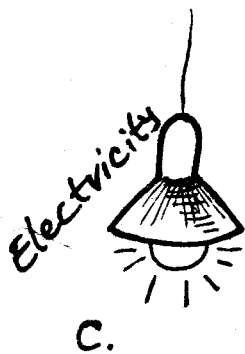
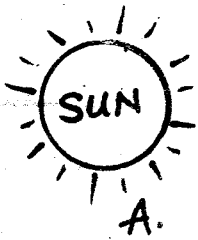
38. We normally know about heat when we \_\_\_\_\_

- A. Hear it
- B. Feel it
- C. See it
- D. Eat it

39. Light can be used to keep away some pests from our houses because \_\_\_\_\_

- A. Some pests do not like lit places
- B. Crops in the light keep away pests
- C. Pests destroy stored crops and food
- D. Some pests do not like dark places

40. Which one among the following **cannot** be classified or grouped as a natural source of light?



41. One of the following animals is **wrongly** matched with what it produces. Which one is it?

- A. Sheep → Mutton
- B. Pig → Skin
- C. Cow → Meat
- D. Goat → Milk

42. Tooth decay **cannot** be prevented by

- A. Eating sweets and sugary foods
- B. Brushing teeth after every meal
- C. Drinking plenty of milk regularly
- D. Regular teeth checks by dentists

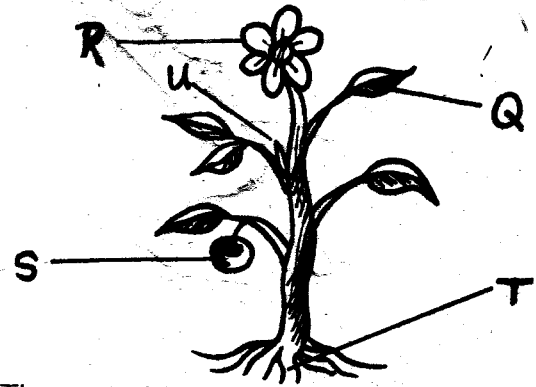
43. Which one of the following plants is **not** useful?

- A. Cabbage
- B. Maize
- C. Cypress
- D. Sodom apple

44. The meat called pork comes from?

- A. Camels
- B. Poultry
- C. Cows
- D. Pigs

The diagram below shows parts of a plant. Use it to answer questions 45 and 46



45. The part which makes food for the plant is marked?

- A. T
- B. R
- C. S
- D. Q

46. What is the work of the part marked R?

- A. To hold branches and leaves in good position
- B. To contain the seeds
- C. To absorb water and plant food from the soil
- D. To produce fruits and seeds

47. A cactus plant grows in

- A. Cold areas
- B. Dry areas
- C. Swampy areas
- D. Rainy areas

48. Water storage containers should be covered with lids

- A. To keep off bad smell
- B. To prevent water from pouring out
- C. To stop dust from getting in
- D. To keep away insects

49. Which of the following words is **not** used to describe the strength of wind?

- A. Gentle breeze
- B. Calm wind
- C. Weak wind
- D. Strong breeze

50. The table below shows the number of permanent teeth in the mouth of a human being.

<u>Teeth</u>	<u>Number</u>
Incisors	8
Canines	8
Premolars	8
Molars	12

Which type of teeth is **wrongly** matched with its number?

- A. Canines
- B. Molars
- C. Incisors
- D. Premolars