

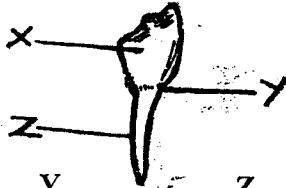
COUNTY BOOST EXAMINATION SERIES

STANDARD FOUR TERM 1 - YEAR 2014

SCIENCE

TIME: 1 HR. 40 MIN

- Which teeth grows when milk teeth falls off?
A. Deciduous teeth B. Shedding teeth
C. Temporary teeth D. Permanent teeth
- Which of the following is **not** a way of controlling weeds?
A. Digging out weeds B. Using herbicides
C. Uprooting by hand D. Planting
- Name the marked plants of the tooth shown below



- | | | |
|----------|-------|-------|
| X | Y | Z |
| A. Crown | Neck | Root |
| B. Neck | Root | Crown |
| C. Neck | Crown | Root |
| D. Crown | Root | Neck |

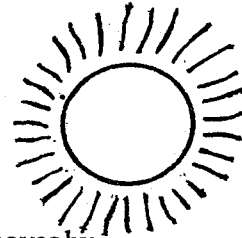
- The tooth shown above is known as _____
A. incisor B. canine C. premolar D. molar
- The tooth is used for _____ food
A. biting B. grinding C. tearing D. crushing
- _____ stands for
A. Human Immunity Virus
B. Human Infectious Virus
C. Human Immune Deficiency Virus
D. Human Immune Virus
- We should visit a _____ for our teeth check up.
A. doctor B. nurse C. teacher D. dentist
- Which of the following crops is an example of beverages crops?
A. Sunflower B. Tea C. Coconut D. Cotton
- Name the plant shown below



- A. sunflower
- B. coconut
- C. maize
- D. sisal

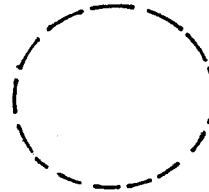
- Which of the following is not an example of weeds?
A. Oxalis B. Wandering jew
C. Sodom apple D. Kales
- Bleeding gums is also referred to as
A. cavities B. gingivitis
C. tooth decay D. dental cavities
- Which of the following plants do we eat it's leaves?
A. carrot B. banana
C. Sukuma wiki. D. Maize

- Which of the following animals coils when touched?
A. Bee B. Tick
C. Millipede D. Wasps
- The weather symbol shown below represents



- A. sun
- B. clouds
- C. moon
- D. star

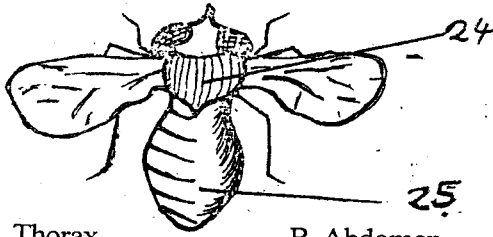
- A fish moves by
A. hopping B. jumping
C. swimming D. walking
- When caring for our teeth we should do the following **EXCEPT**
A. brushing our teeth always
B. avoid sugary foods
C. avoiding using tooth picks
D. breaking hard things
- Food remains forms a rough layer on the teeth called
A. plague B. cavity
C. bacteria D. plaque
- In the word AIDS "s" stands for
A. sexual B. syndrome
C. signs D. symptoms
- Which of the following groups contains tuber crops only?
A. Potatoes, yams, beans, cassava
B. MANGOS, ORANGES, pawpaw, pineapples
C. Cassavas, arrowroots, potatoes, yams
D. Maize, rice, wheat, kales
- The sun sets at the end of the day in the _____
A. west B. East
C. North D. South
- Which instruments can be used to see stars?
A. Telescope B. Glasses
C. Plastics D. Papers
- The phase of the moon shown below is known as



- A. crescent
- B. new moon
- C. full moon
- D. gibbous

- A person who cannot see has a problem with
A. ears B. head
C. eyes D. nose

Name the part of the insect shown below



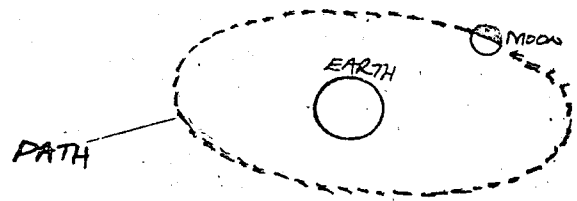
24. A. Thorax B. Abdomen
C. Stomach D. Body
25. A. Head B. Thorax
C. Abdomen D. Stomach
26. Why do we boil milk?
A. Kill germs B. Make it clean
C. Make it more D. Reduce it
27. It's bad manners to _____ our plates after meals
A. eat B. lick C. wash D. clean

Study the weather chart below and answer questions 28 - 31:-

DAYS	MORNING	AFTERNOON
MONDAY		
TUESDAY		
WEDNESDAY		
THURSDAY		
FRIDAY		

28. The weather on Thursday morning is said to be
A. cold B. windy C. calm D. heavy
29. Which days did people not use umbrellas?
A. Monday and TUESDAY
B. Tuesday and FRIDAY
C. Wednesday and MONDAY
D. Friday and WEDNESDAY
30. What kind of clothes were worn on FRIDAY?
A. Heavy B. Black C. Right D. Light
31. Which day was it rainy throughout?
A. Monday B. Tuesday
C. Thursday D. Friday
32. Which of the following plants below is used to make baskets?
A. Sisal B. Cocoa C. Grapes D. Cotton
33. A true insect has _____ legs.
A. 6 B. 8 C. 4 D. 3
34. Moving air is called
A. Wind B. Rain C. Moisture D. Water
35. People who study the stars and other objects in the sky are called _____
A. Astronomy B. Meteorologists
C. Starry D. Astronomers

36. The path used by the moon as shown below is called



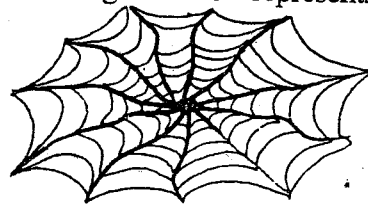
- A. Pathway B. Orbit C. Surface D. Rotation
37. The clouds shown below are seen high in the sky and they look like feathers they are called



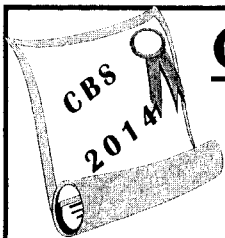
- A. Cumulus
B. Nimbus
C. Columbus
D. Cirrus
38. Which problem of the teeth is shown below?



- A. Cavities
B. Dental cavities
C. Gingivitis
D. Gum
39. What is the function of the tongue?
A. Taste B. See C. Smell D. Eat
40. How many teeth are in a child of 4 years?
A. 32 B. 12 C. 20 D. 16
41. We use _____ to make work easier
A. machine B. money C. vehicles D. drugs
42. The following are examples of cash crop which one is not?
A. Tea B. Coffee C. Pyrethrum D. Beans
43. The soil that contains very large particles is
A. clay B. loam C. humus D. sandy
44. Which of the following foods can be eaten without cooking?
A. Carrots B. Potatoes C. Cabbages D. Meat
45. The diagram below represents the house of a



- A. snake
B. bees
C. spider
D. housefly
46. We eat food to grow _____
A. sick B. ill C. fat D. healthy
47. Drinking water should be _____
A. boiled B. germed C. warmed D. tested
48. Clay soil is best for _____
A. farming B. building houses
C. firewood D. modelling
49. We should clean our hands _____ visiting the toilet
A. before B. during
C. after D. at the time of
50. Which disease is spread by mosquito?
A. Malaria B. AIDS
C. Headache D. Stomachache



COUNTY BOOST EXAMINATION SERIES

STANDARD FIVE TERM 1 - YEAR 2014

MARKING SCHEME

MATHS		ENGLISH		KISWAHILI		SCIENCE		SOCIAL STUDIES & CRE		
1. A	31. B	1. A	31. A	1. D	31. B	1. D	31. D	1. D	31. C	61. B
2. C	32. A	2. B	32. D	2. C	32. B	2. A	32. B	2. A	32. C	62. B
3. B	33. C	3. C	33. B	3. A	33. A	3. C	33. A	3. A	33. A	63. A
4. B	34. C	4. D	34. C	4. B	34. D	4. D	34. B	4. A	34. B	64. A
5. D	35. B	5. A	35. B	5. B	35. C	5. C	35. C	5. B	35. A	65. C
6. A	36. D	6. A	36. A	6. C	36. B	6. B	36. D	6. C	36. C	66. B
7. A	37. D	7. B	37. D	7. D	37. D	7. D	37. C	7. D	37. D	67. B
8. B	38. A	8. D	38. A	8. B	38. C	8. C	38. B	8. B	38. C	68. C
9. D	39. B	9. A	39. D	9. B	39. A	9. B	39. C	9. D	39. B	69. D
10. C	40. A	10. B	40. B	10. B	40. A	10. C	40. D	10. A	40. A	70. C
11. B	41. A	11. B	41. C	11. B	41. A	11. A	41. C	11. B	41. A	71. A
12. B	42. B	12. A	42. D	12. C	42. B	12. D	42. B	12. C	42. D	72. B
13. C	43. B	13. C	43. B	13. A	43. D	13. A	43. A	13. C	43. A	73. D
14. D	44. A	14. A	44. A	14. A	44. C	14. D	44. C	14. B	44. C	74. D
15. B	45. A	15. B	45. C	15. C	45. B	15. A	45. B	15. B	45. A	75. A
16. D	46. D	16. B	46. A	16. B	46. A	16. C	46. A	16. A	46. B	76. C
17. A	47. A	17. D	47. D	17. C	47. C	17. A	47. C	17. B	47. D	77. B
18. A	48. B	18. D	48. B	18. D	48. C	18. C	48. A	18. C	48. A	78. D
19. A	49. C	19. B	49. C	19. D	49. C	19. A	49. A	19. B	49. B	79. A
20. D	50. D	20. A	50. A	20. A	50. D	20. B	50. B	20. C	50. A	80. C
21. B		21. D		21. C		21. B		21. D	51. B	81. A
22. C		22. B		22. C		22. C		22. C	52. A	82. D
23. C		23. B		23. D		23. D		23. B	53. C	83. B
24. D		24. A		24. B		24. A		24. C	54. D	84. D
25. C		25. B		25. B		25. C		25. A	55. B	85. A
26. D		26. C		26. C		26. B		26. B	56. B	86. C
27. B		27. A		27. A		27. C		27. D	57. A	87. B
28. C		28. D		28. A		28. B		28. A	58. A	88. D
29. A		29. D		29. C		29. A		29. D	59. B	89. B
30. D		30. C		30. B		30. D		30. A	60. C	90. C

COMPOSITION MARKING SCHEME

MARKING CRITERIA

1. The composition will be assessed according to the following guidelines.

- The maximum mark will be 40 and the minimum mark 01

- Does the script show that the candidate can communicate accurately fluently and imaginatively in English?

Accuracy (8 marks)

(8 marks)

(a) Correct tenses and agreement of verbs (4 marks) (b) Accurate use of vocabulary (4 marks)

(16) (c) Following a sequence (4 marks)

(d) Correct punctuation

(4 marks)

Fluency (8 marks)

(8 marks)

(a) Words in the correct order (4 marks) (b) Sentence connected and paragraphs (4 marks)

(b) Correct spelling (4 marks)

(d) Ideas developed in logical sequence (4 marks)

Imagination (8 marks)

(a) Unusual but appropriate use of words and phrases (4 marks)

(b) Variety of structure (4 marks)

NB: Please, teachers are requested to scrutinize this marking scheme before use. It is worth.

